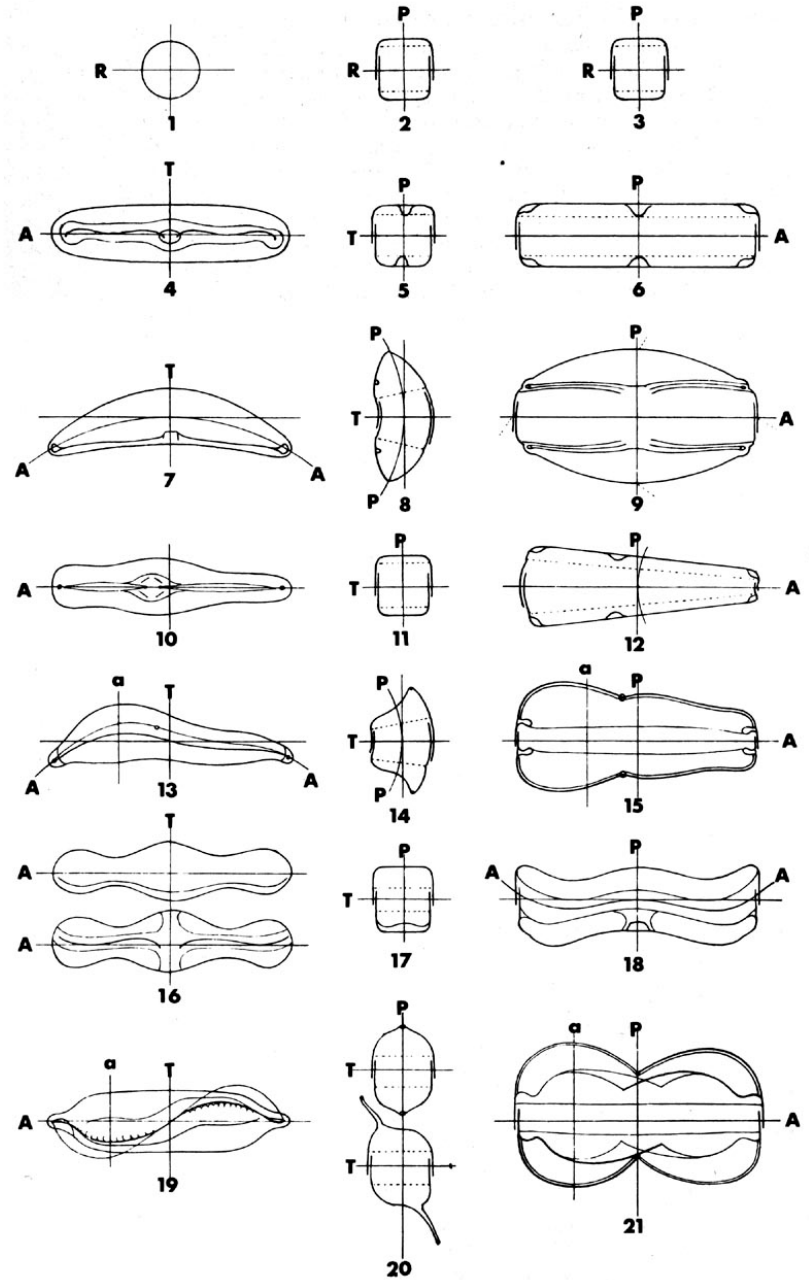
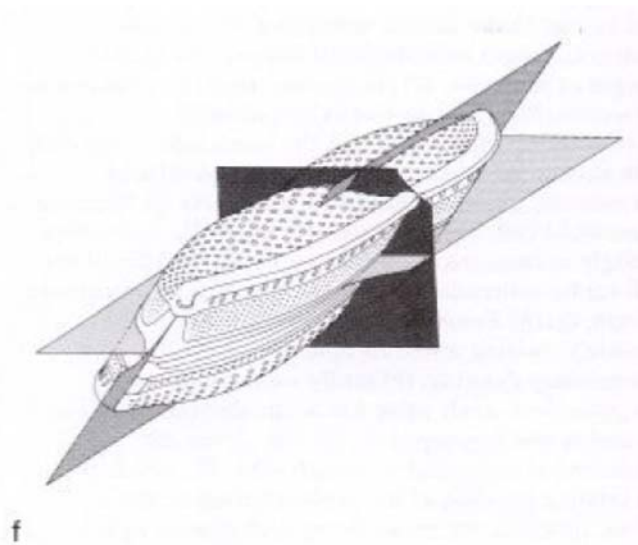
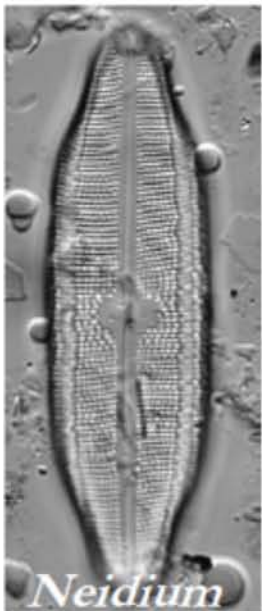


penátní rozsivky
praktika II

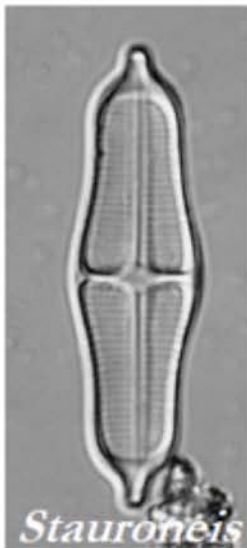
shape

- *isopolar*
 - *isobilateral*
 - *dorziventral*
- *heteropolar*

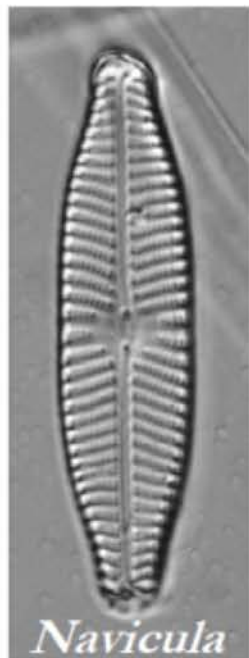




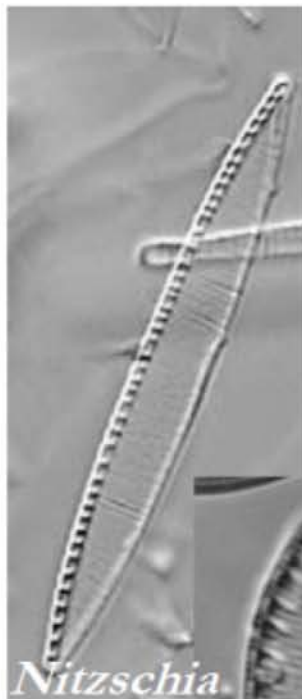
Neidium



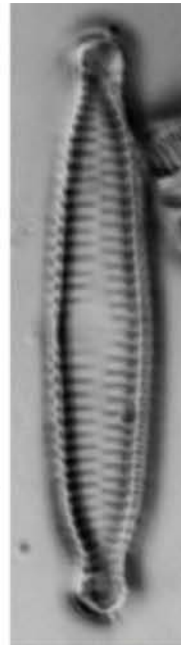
Stauroneis



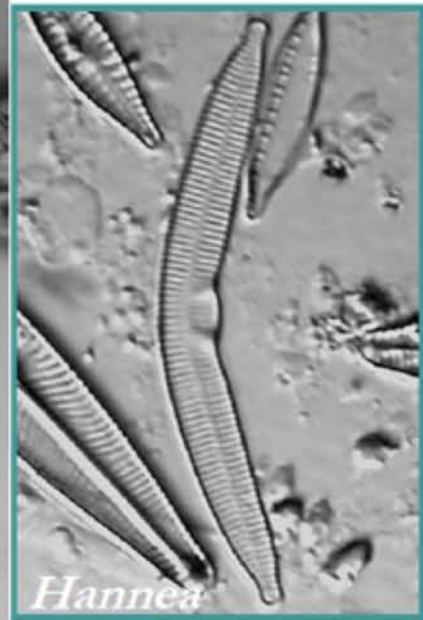
Navicula



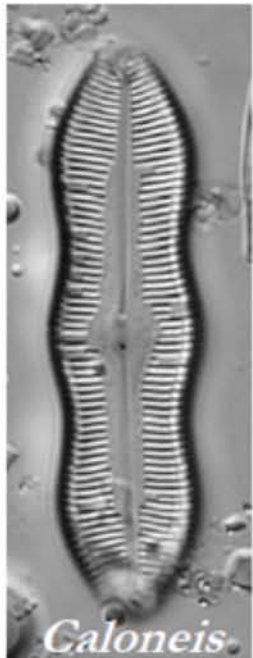
Nitzschia



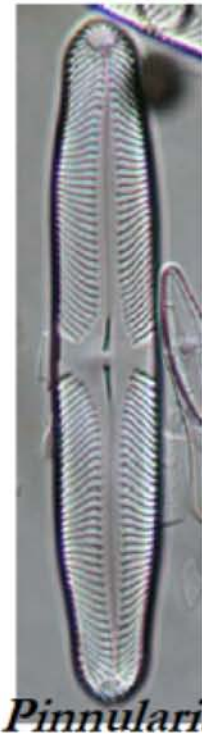
Fragilaria



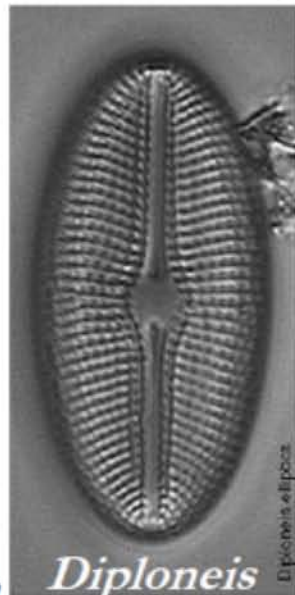
Hannea



Caloneis

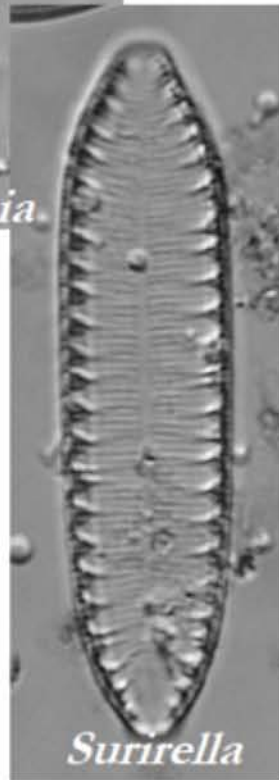


Pinnularia

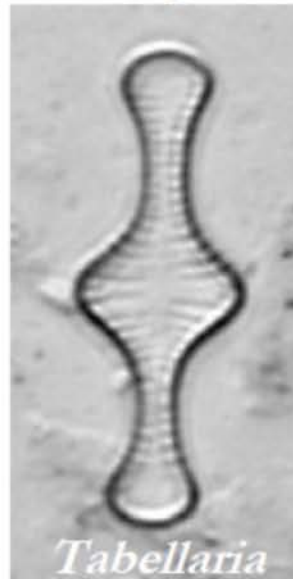


Diploneis

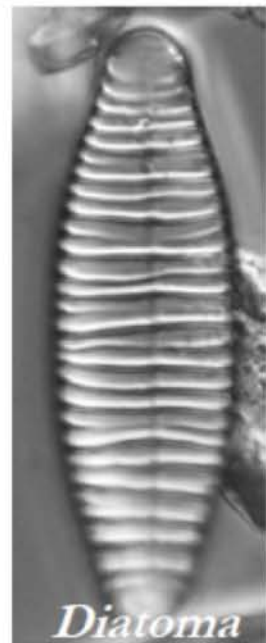
Diploneis elliptica



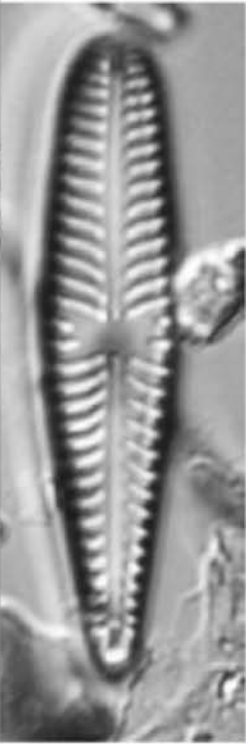
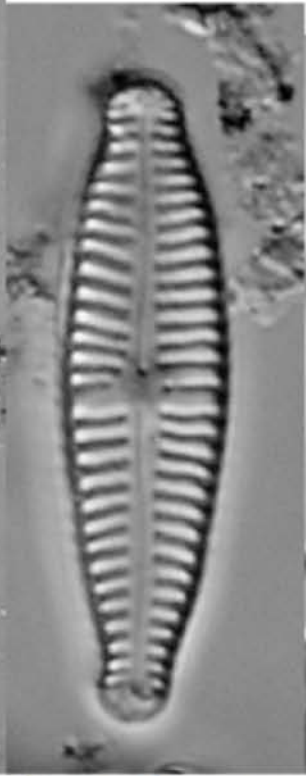
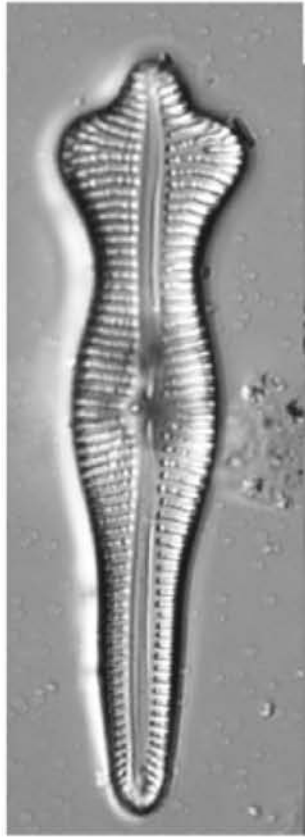
Surirella



Tabellaria



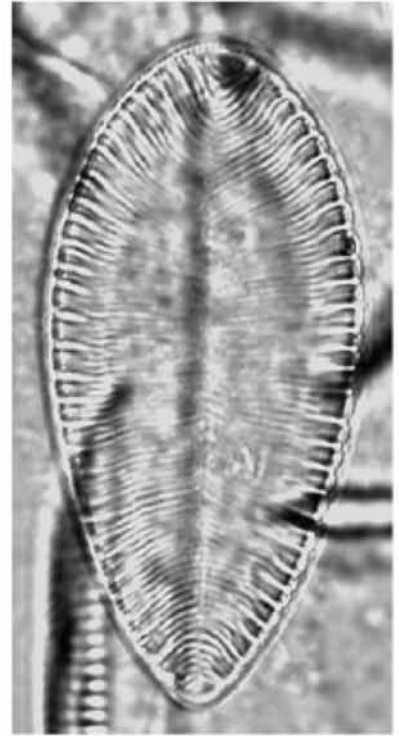
Diatoma



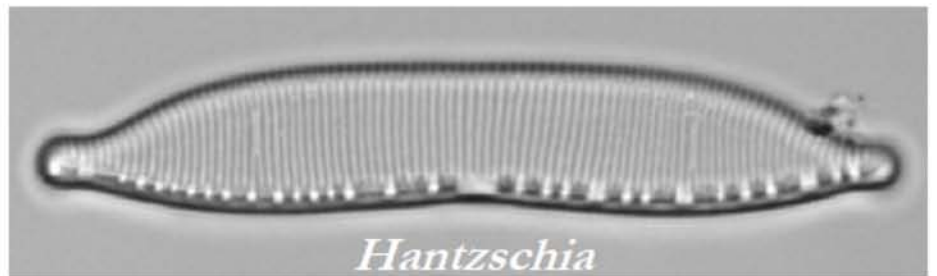
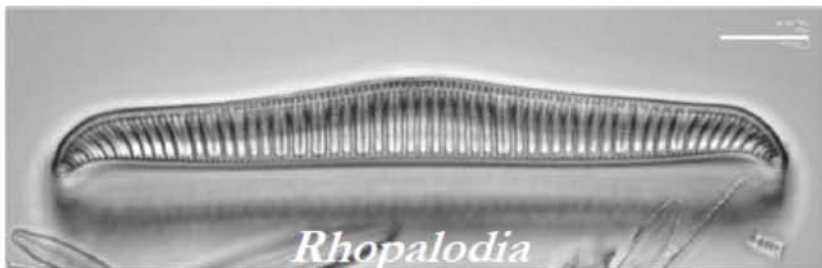
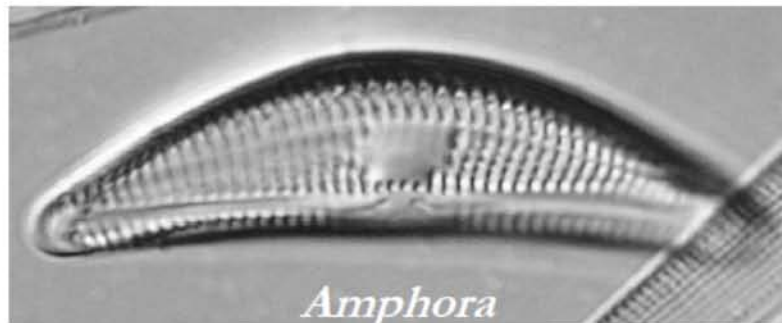
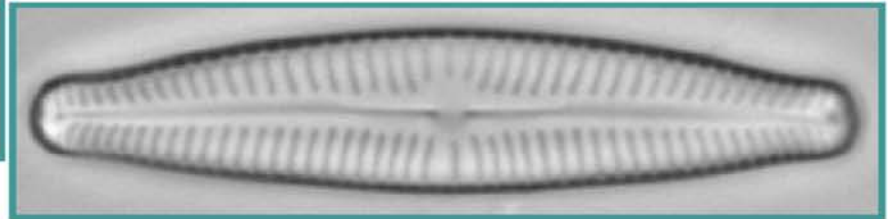
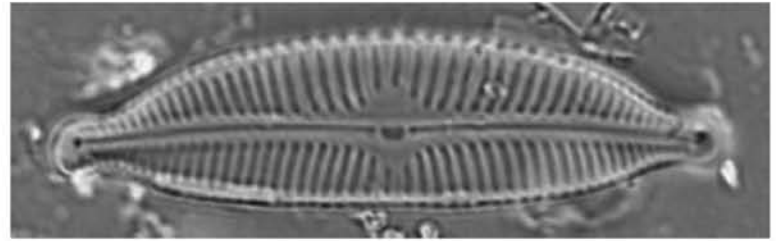
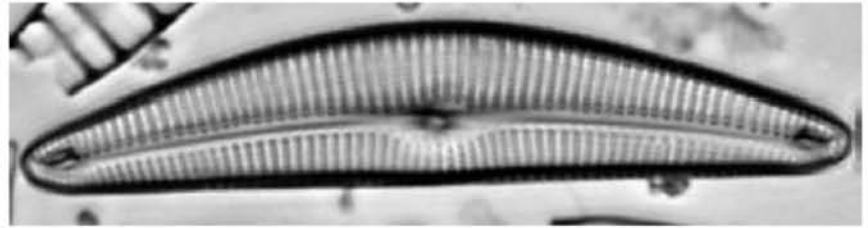
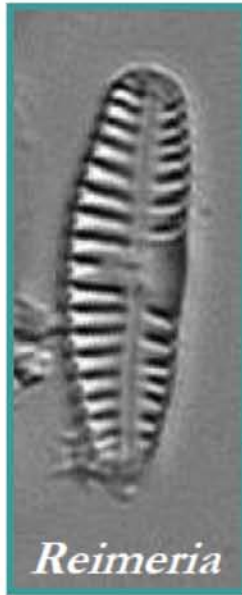
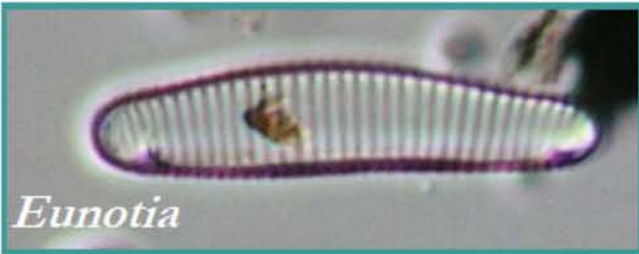
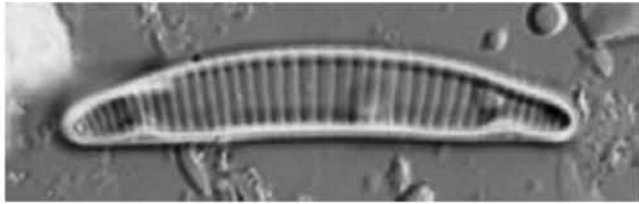
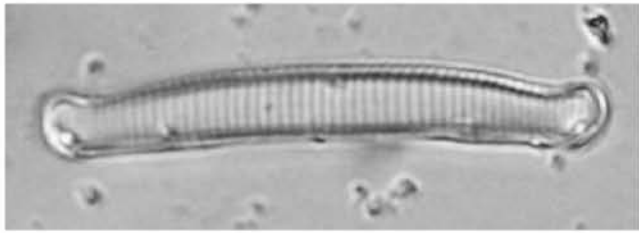
Gomphonema

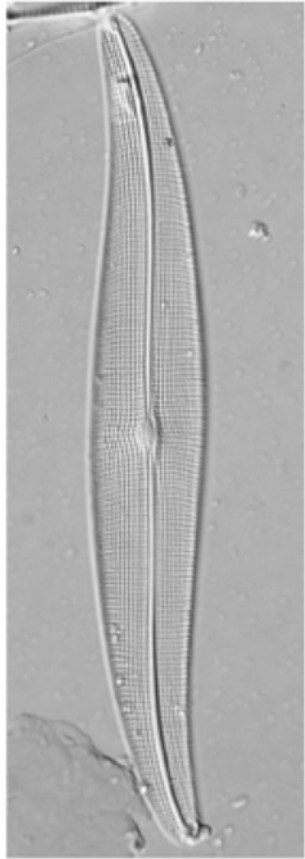


Rhoicosphenia Meridion

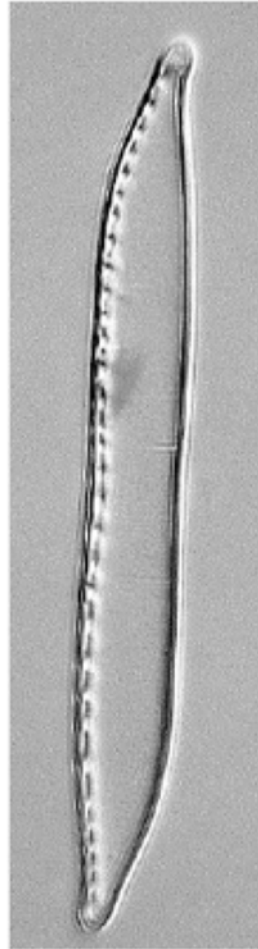


Surirella

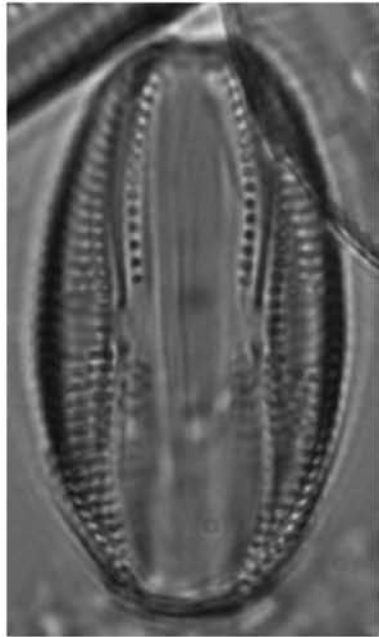




Gyrosigma / Pleurosigma



Nitzschia



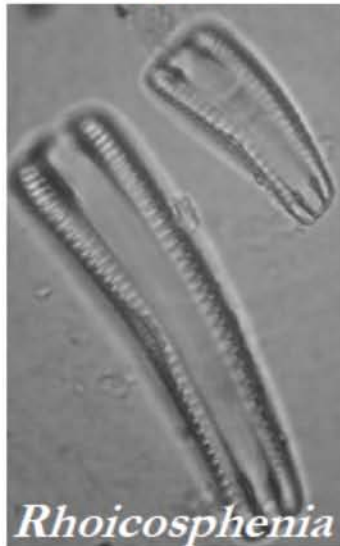
Amphora



Campylodiscus

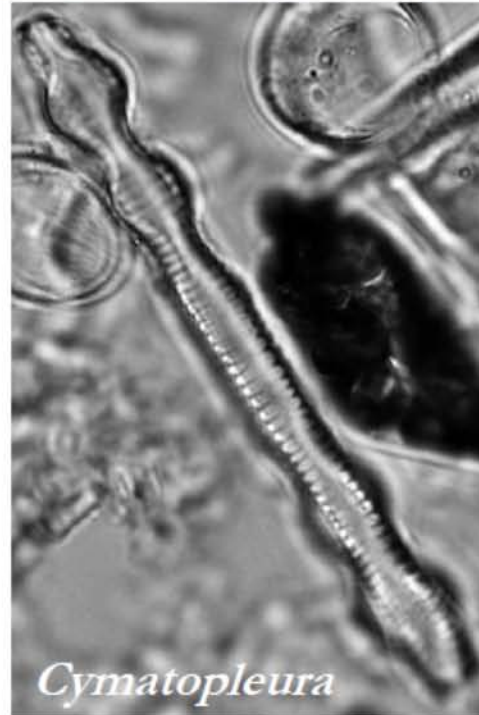


Surirella



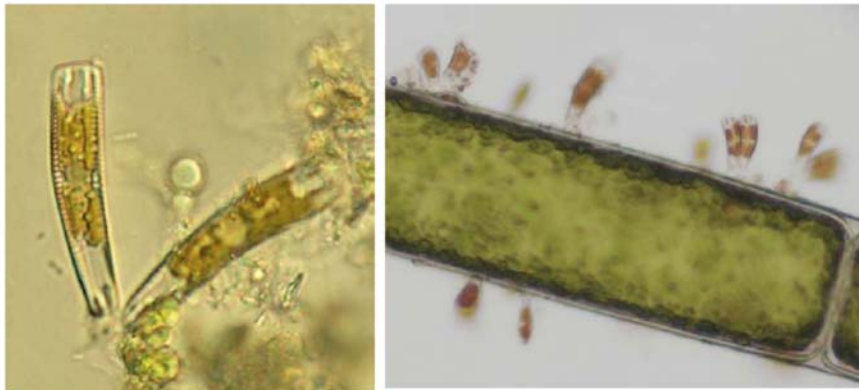
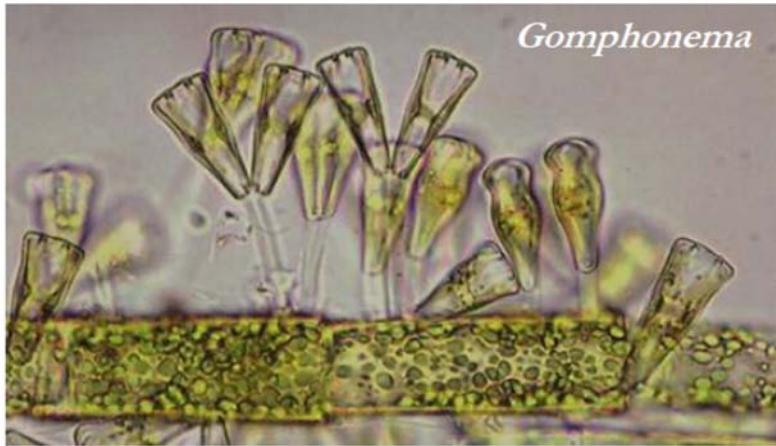
Rhoicosphenia

Achnanthes

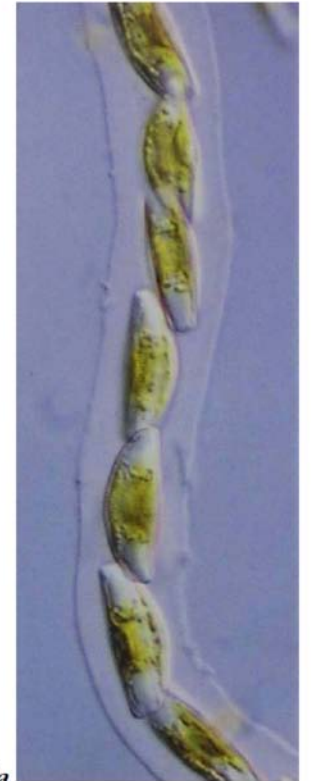


Cymatopleura

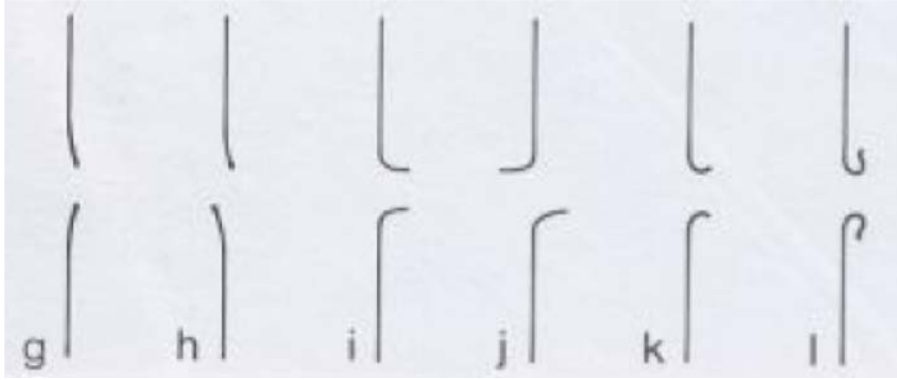




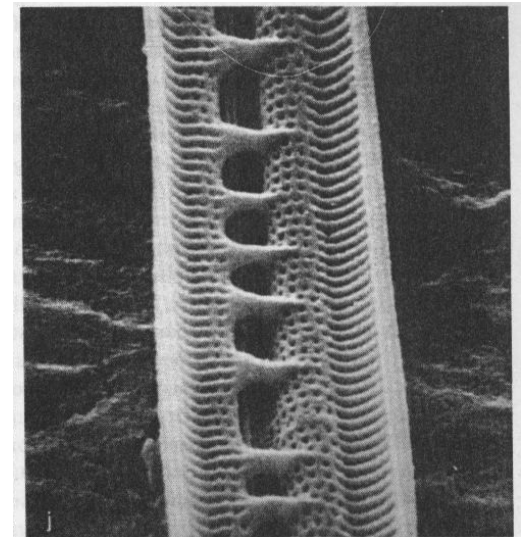
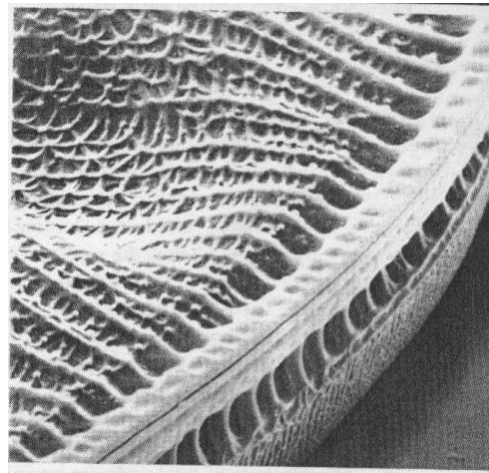
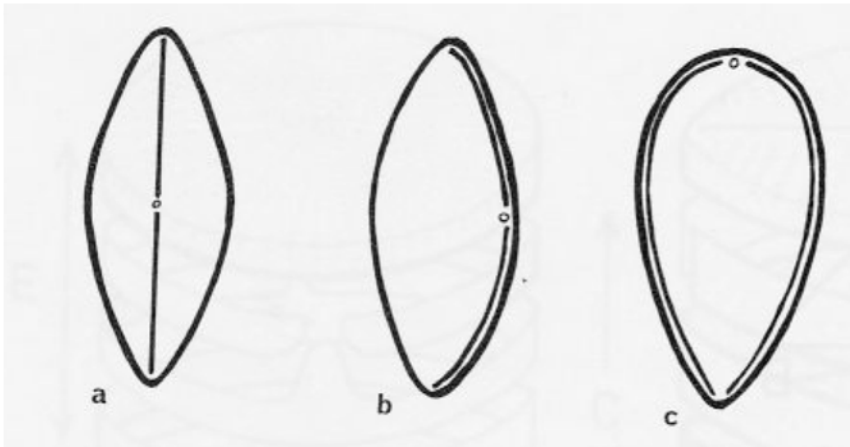
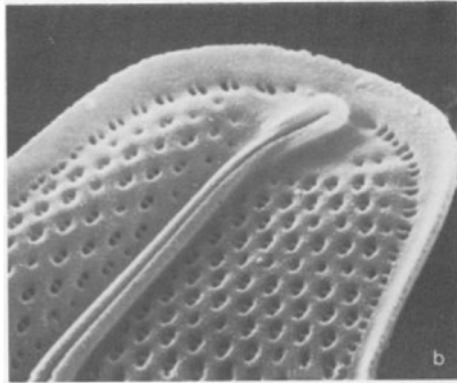
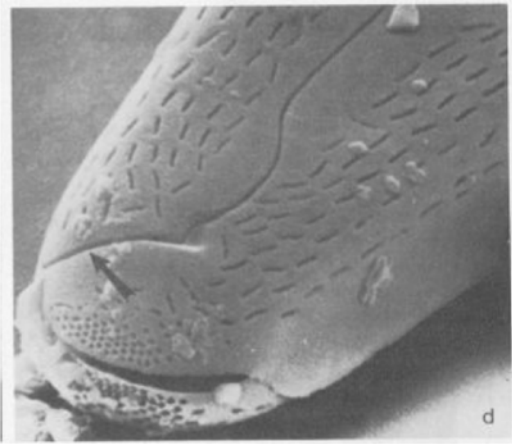
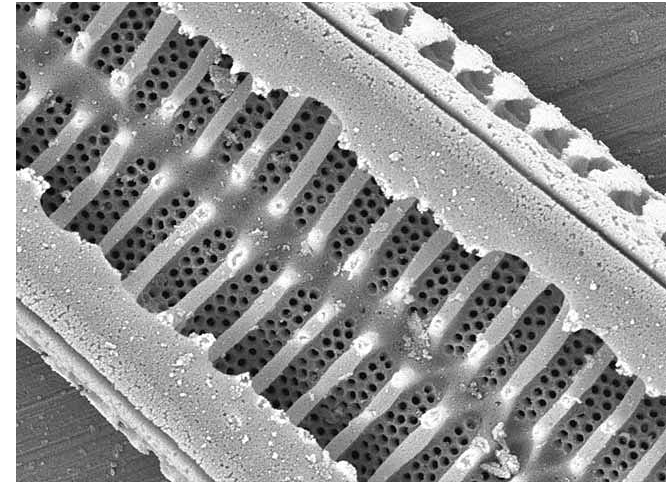
Rhoicosphenia

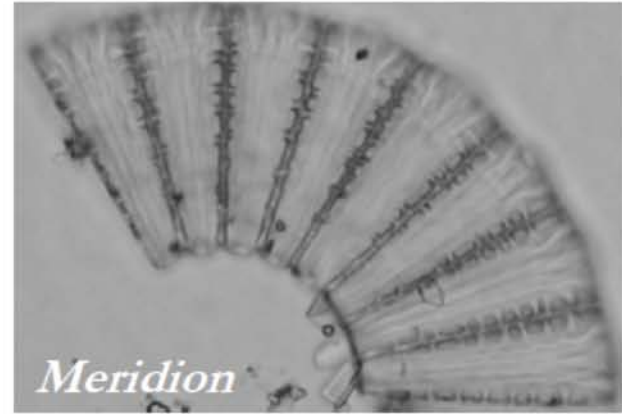


Cymbella

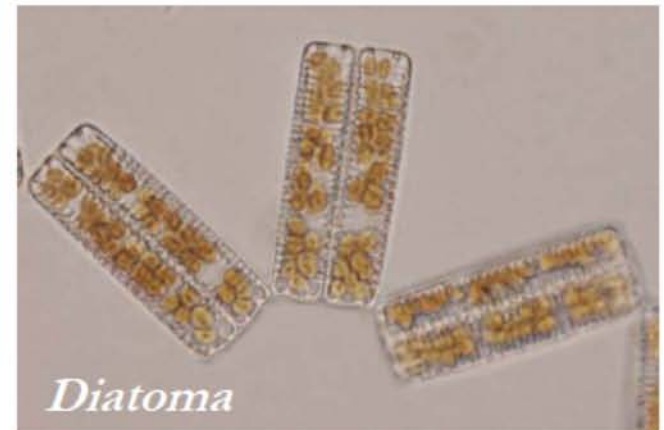
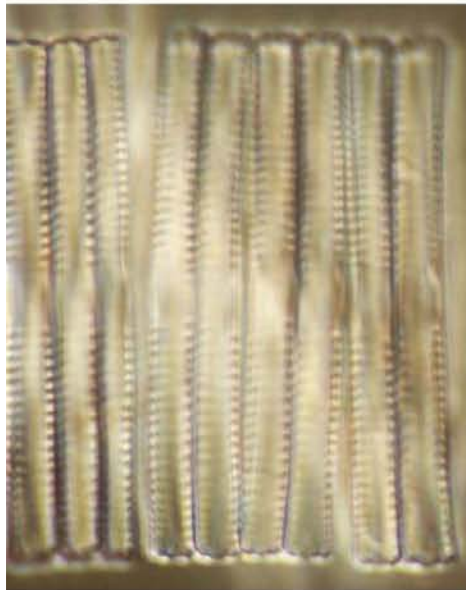


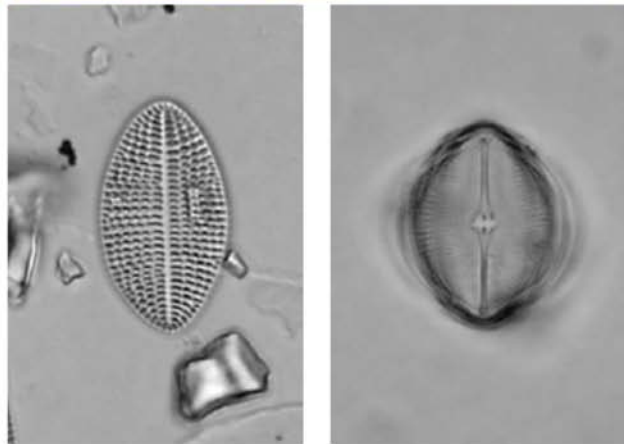
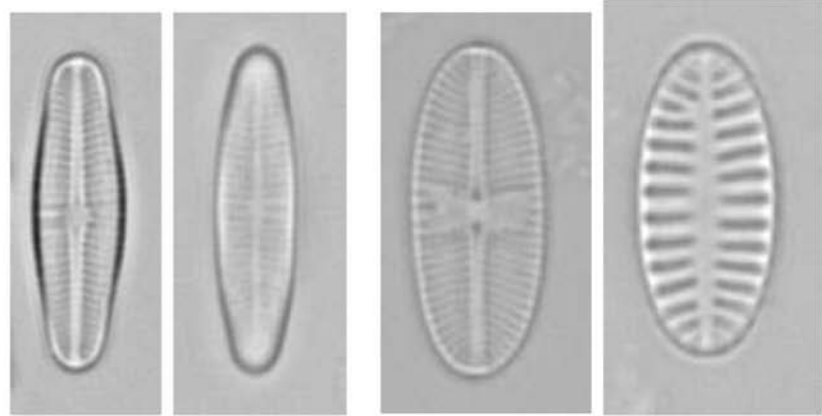
raphe / pseudoraphe



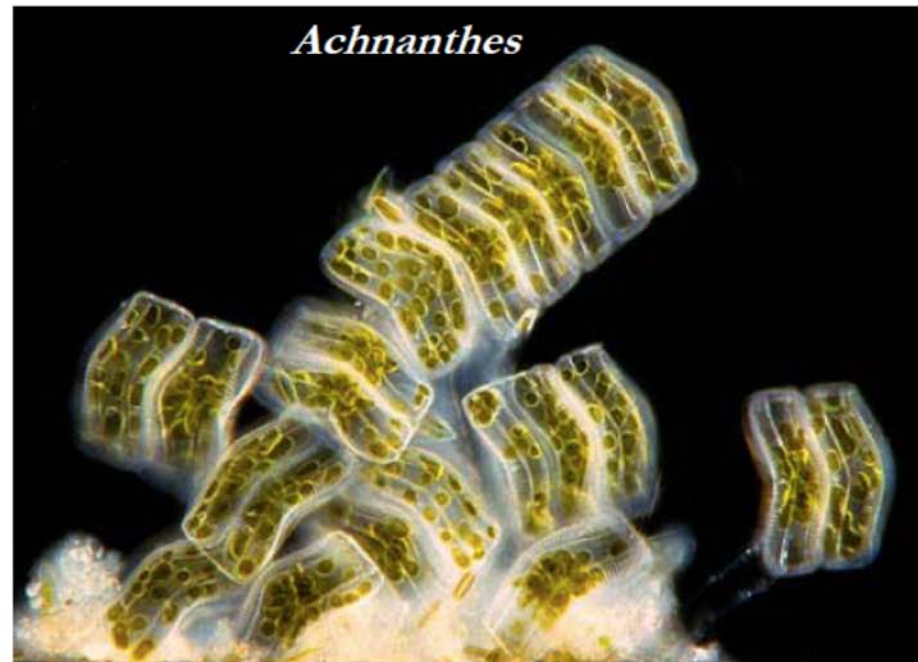


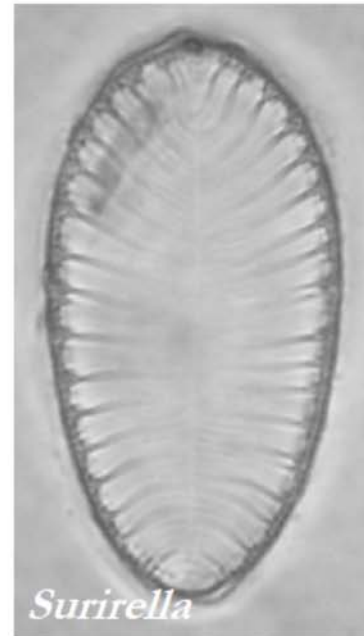
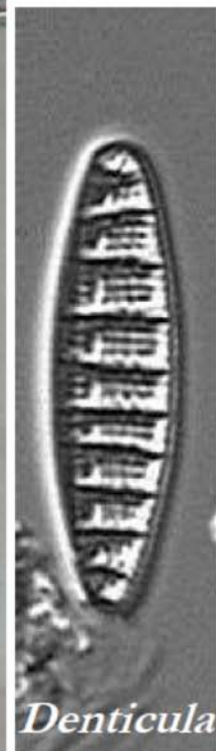
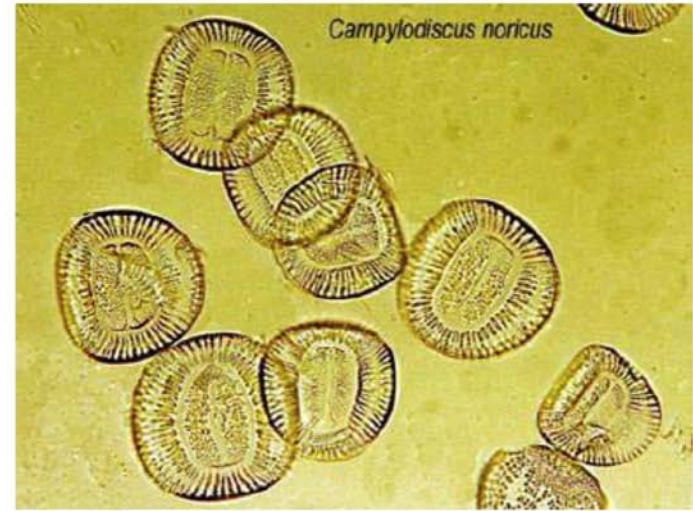
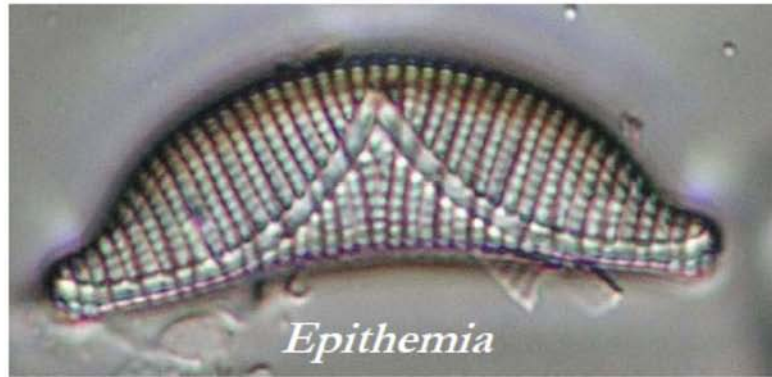
Fragilaria



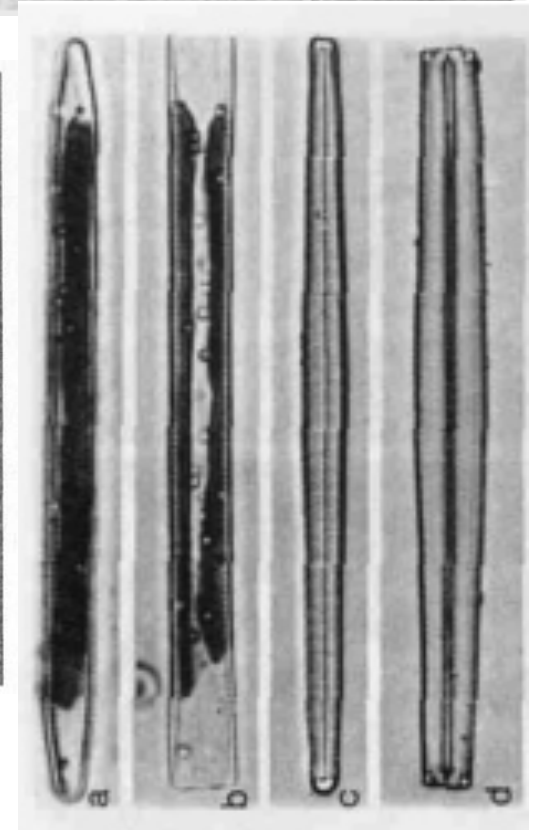
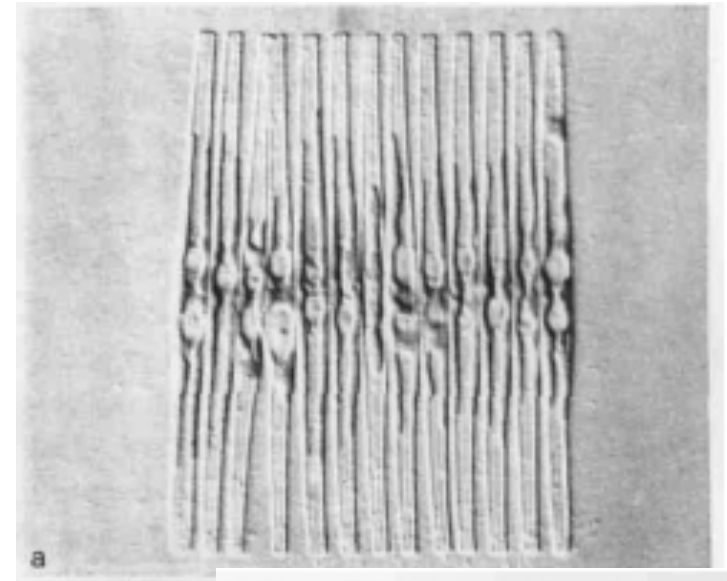
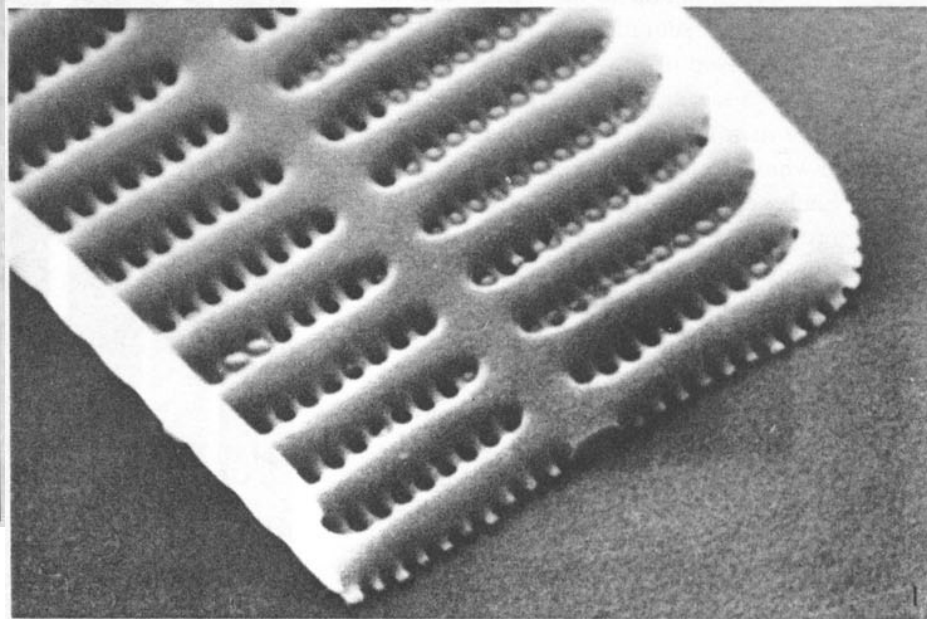
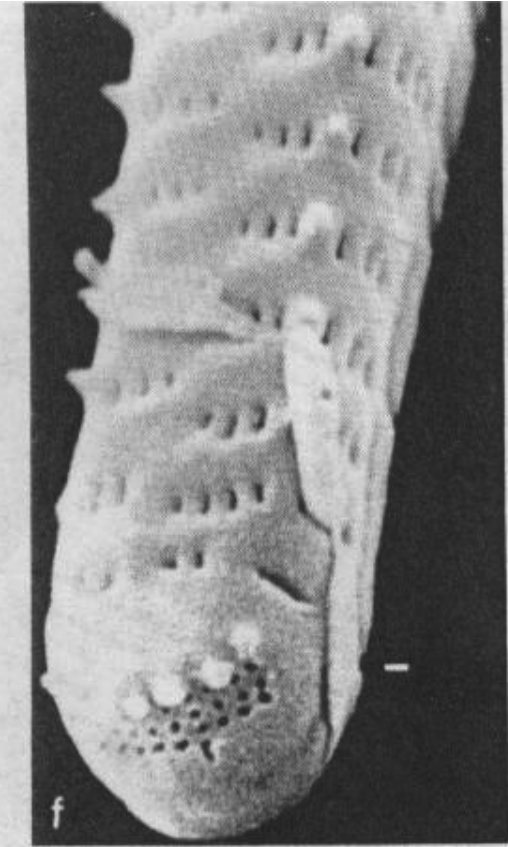


Cocconeis



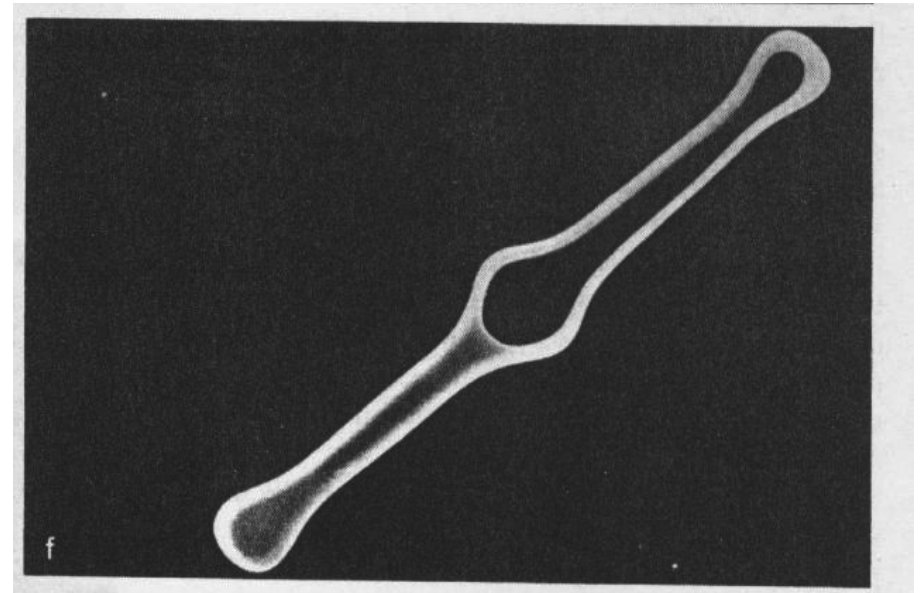
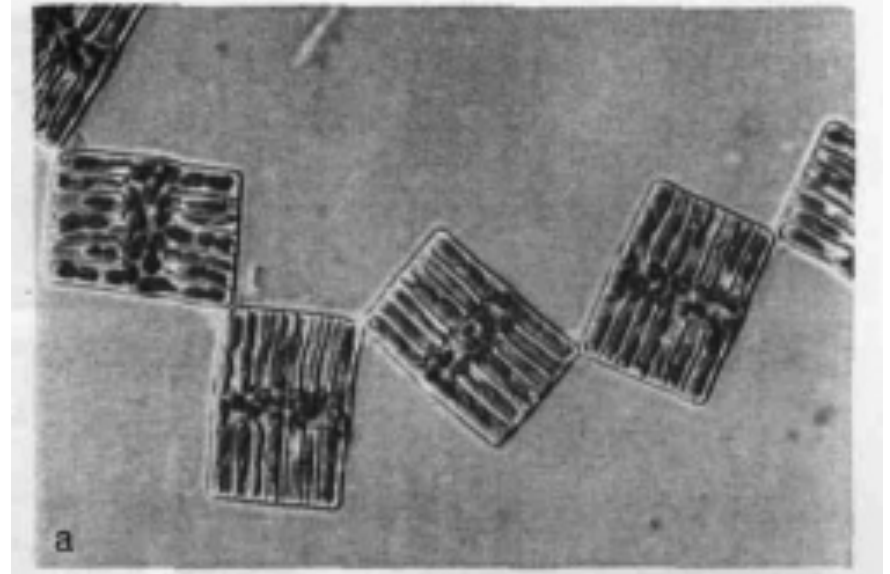
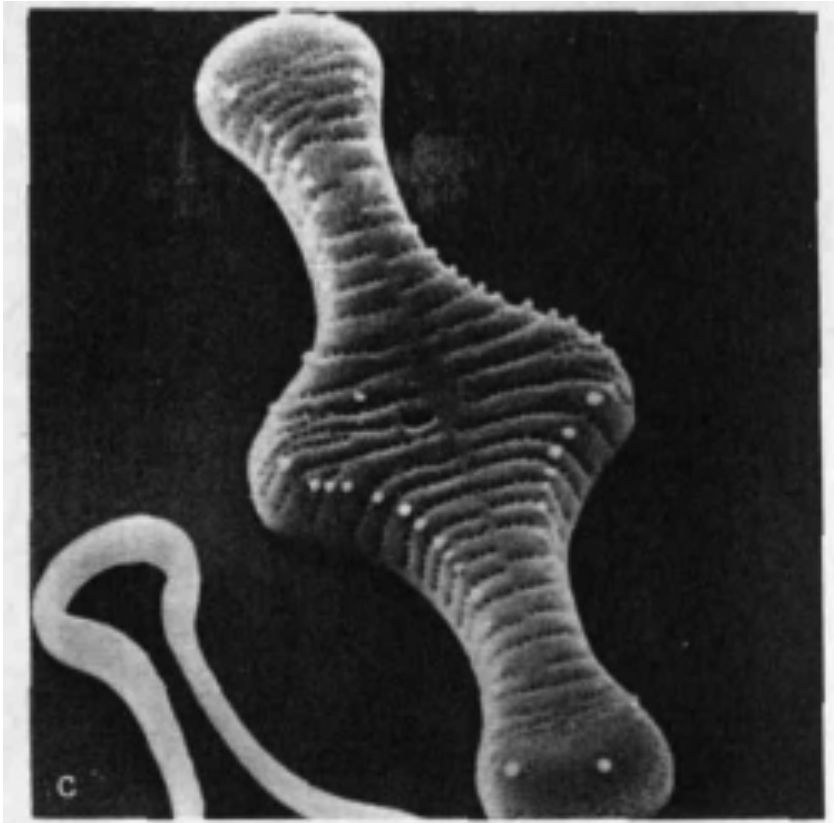


Fragilaria / Synedra

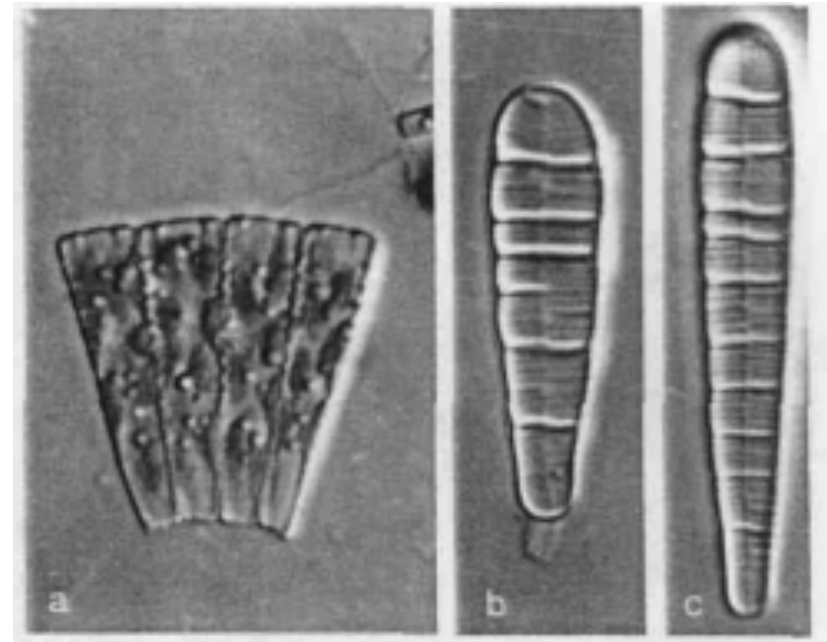
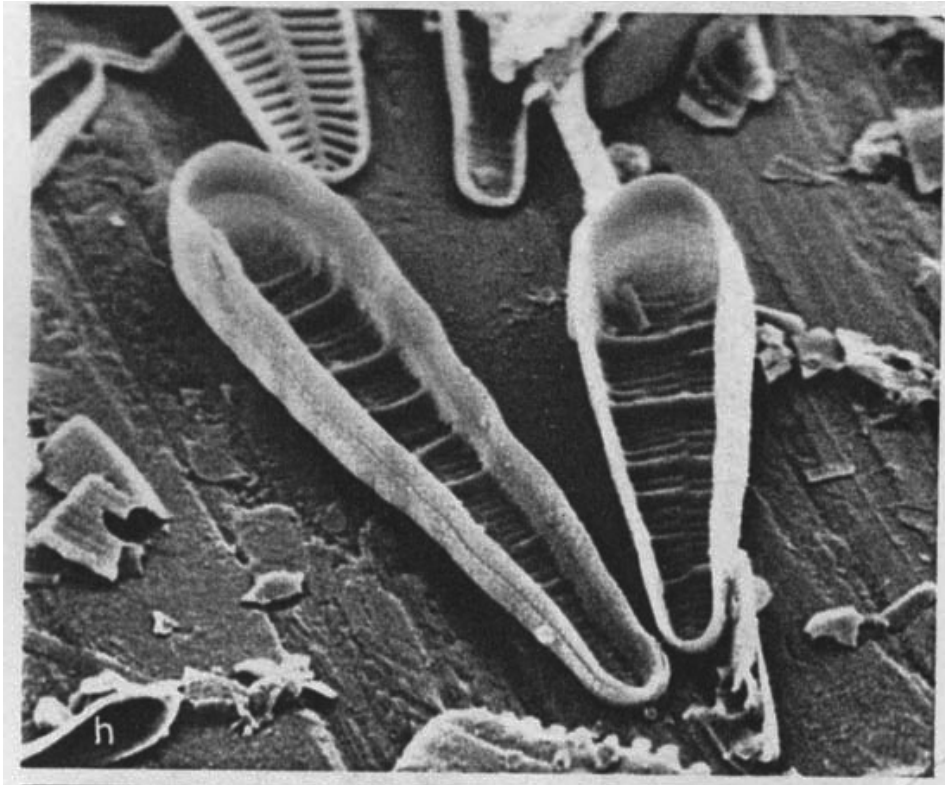


Fragilariforma, Staurosisella, Staurosira, Punctastriata, Martyana, Ctenophora...

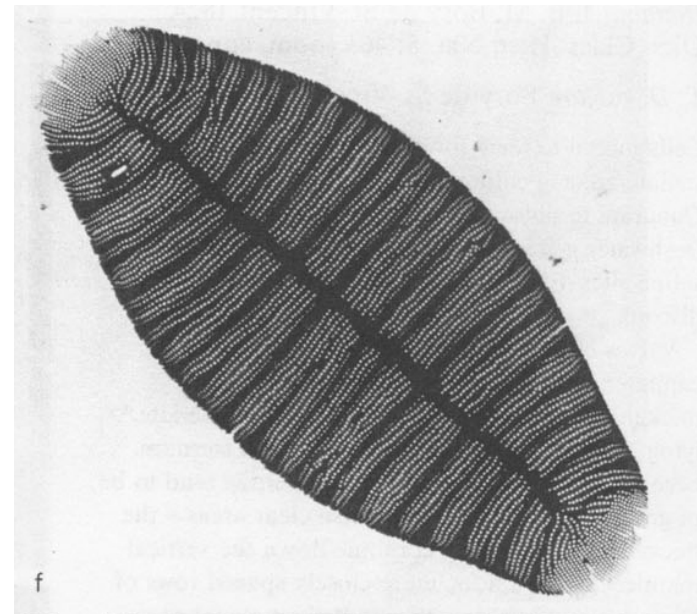
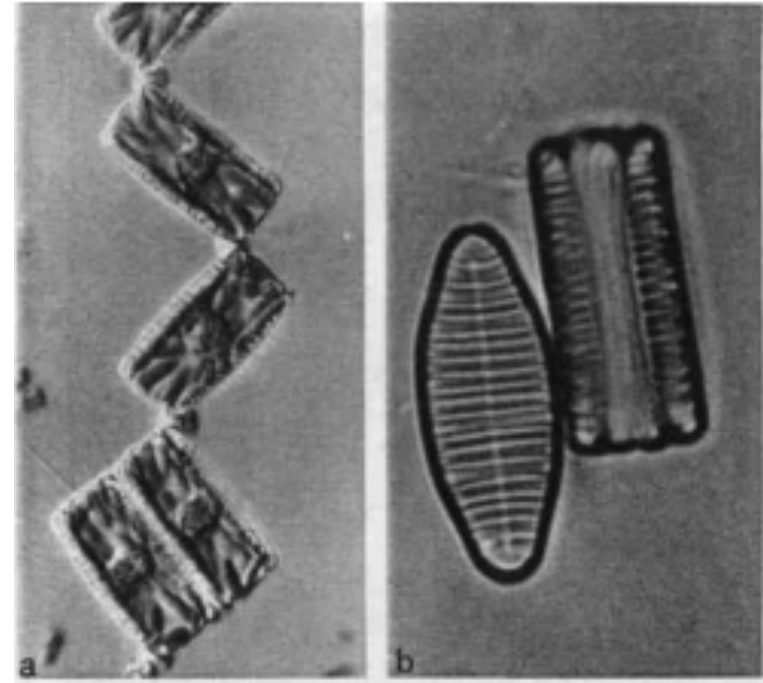
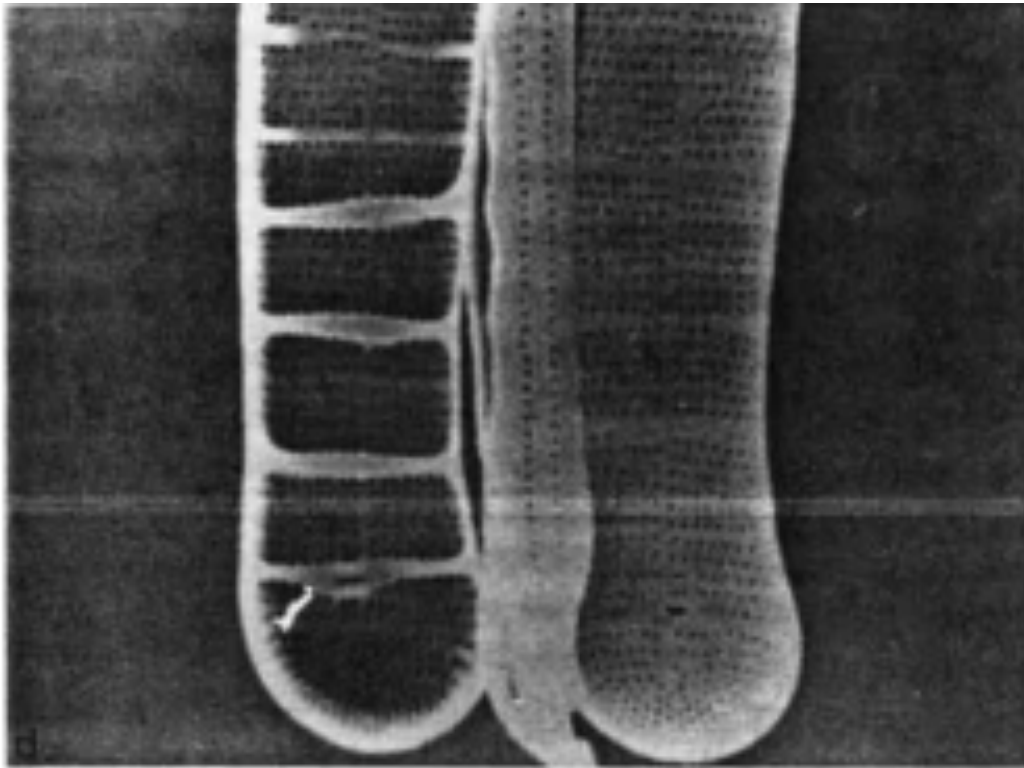
Tabellaria



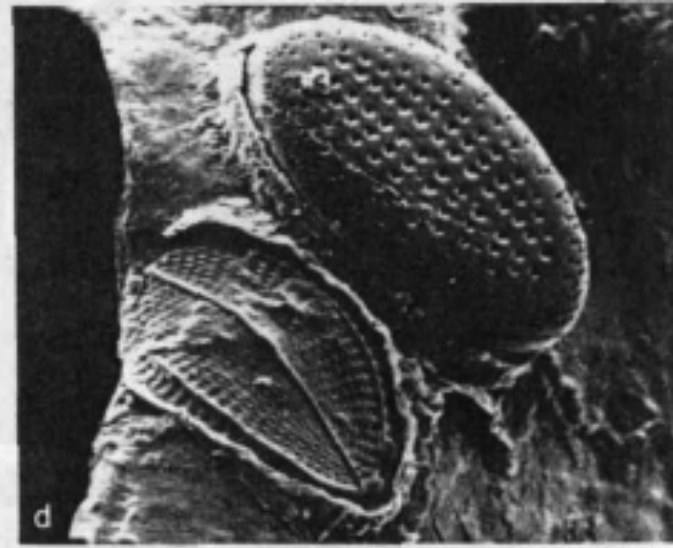
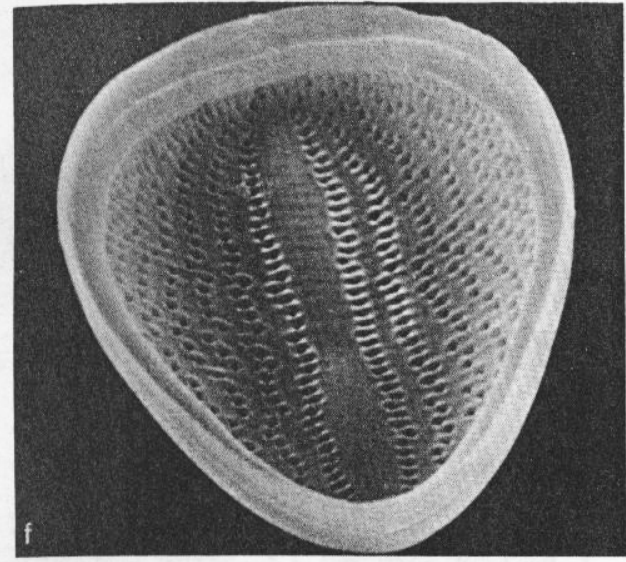
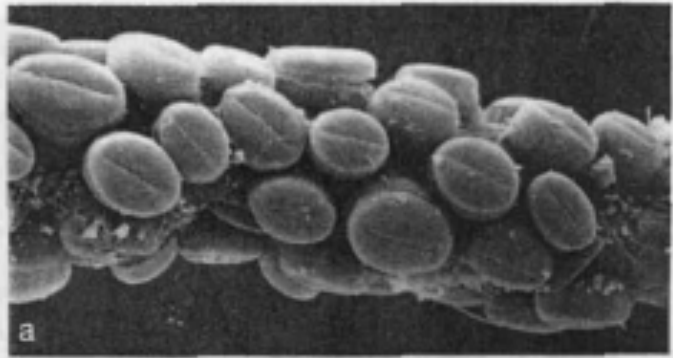
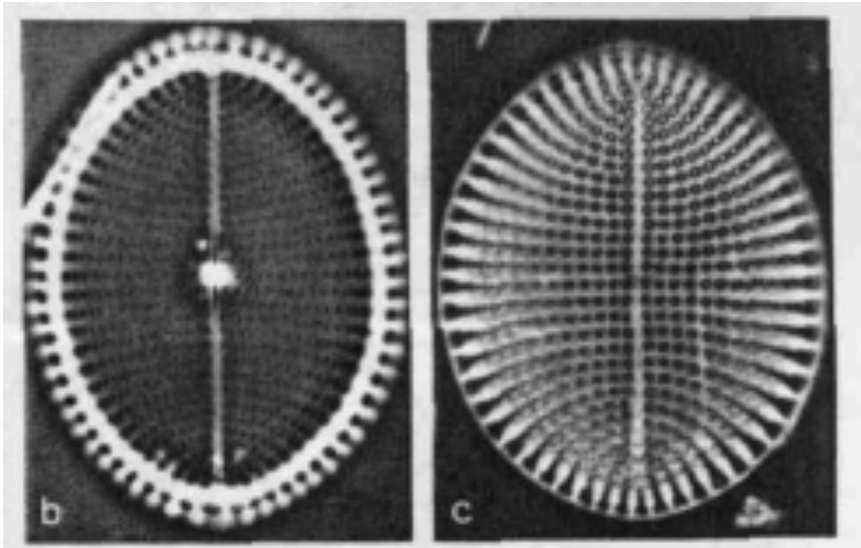
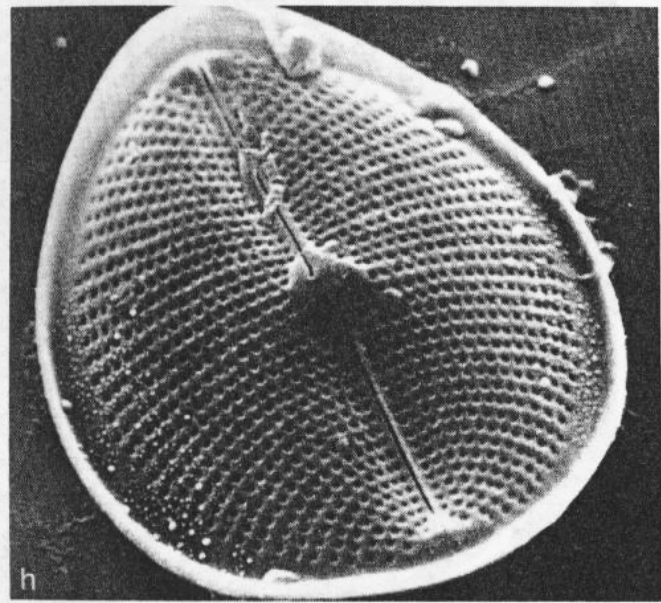
Meridion



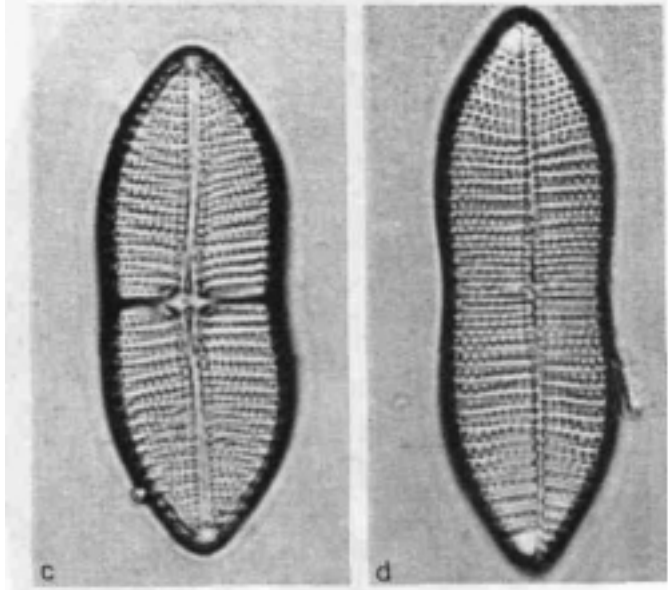
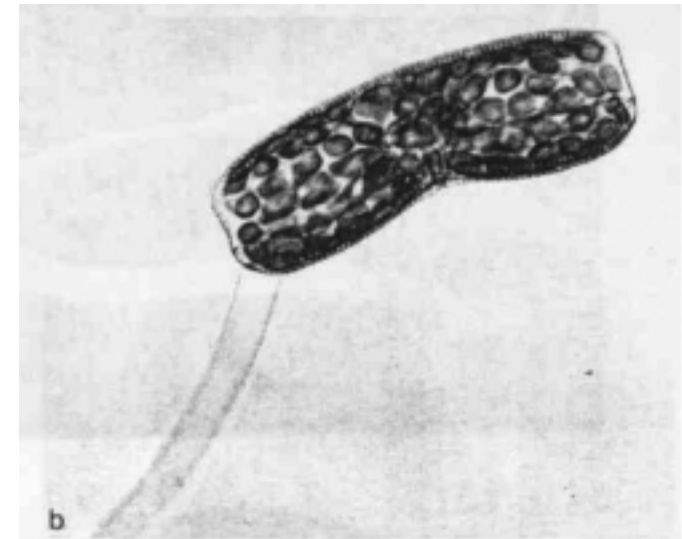
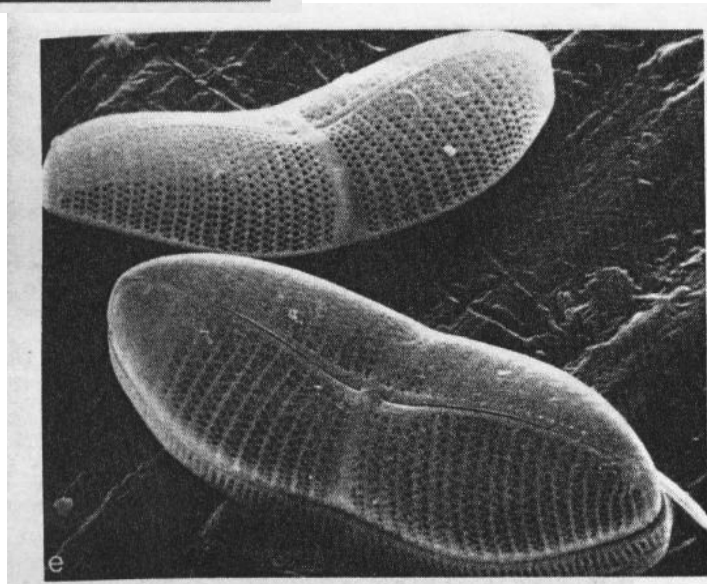
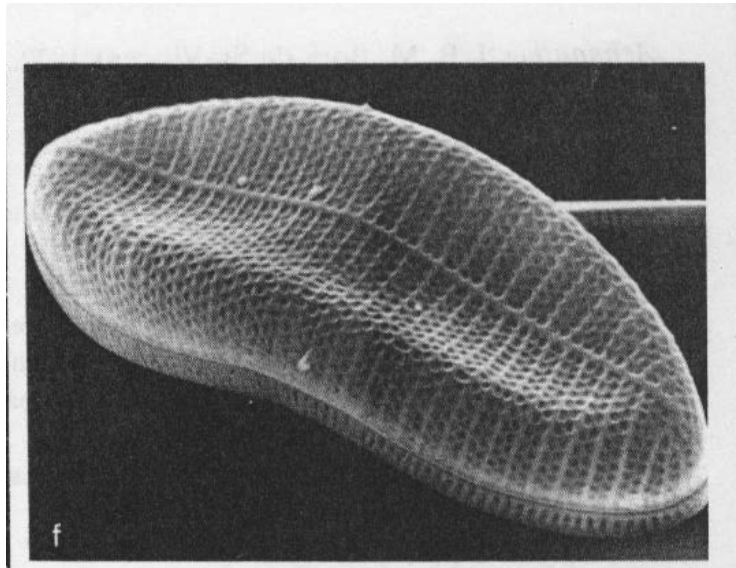
Diatoma



Cocconeis

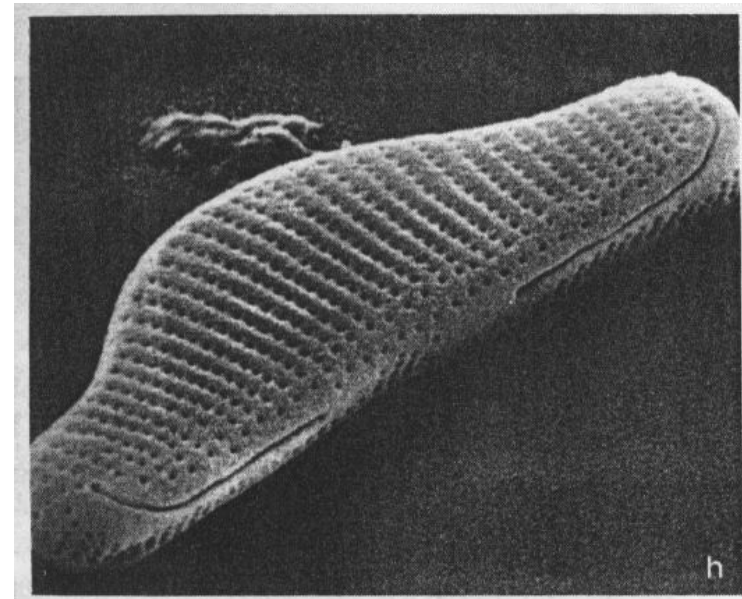
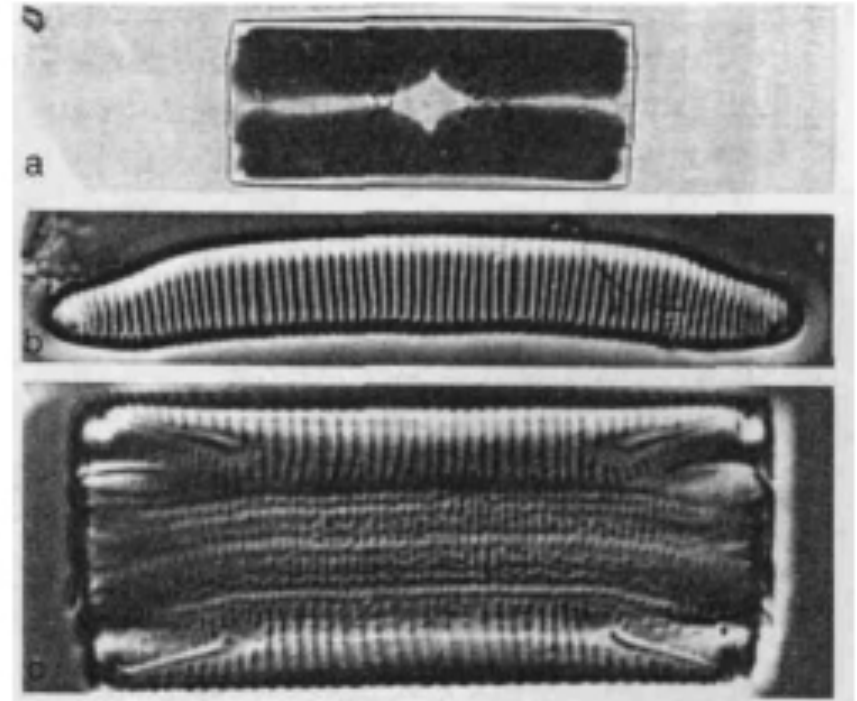
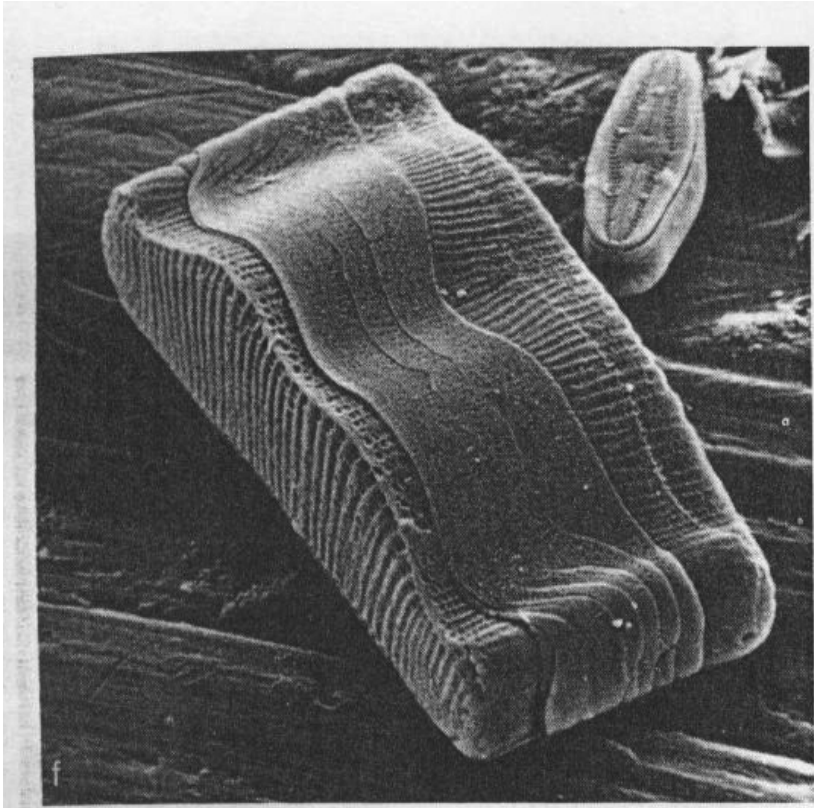


Achnanthes

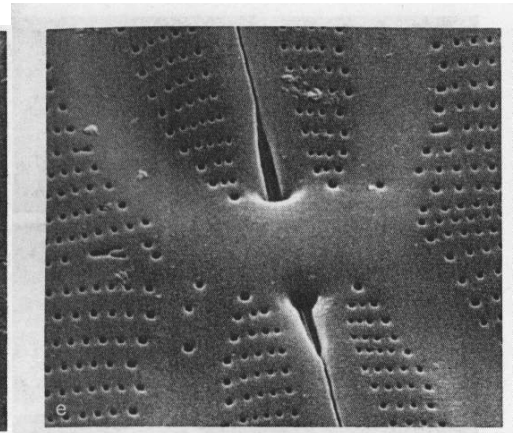
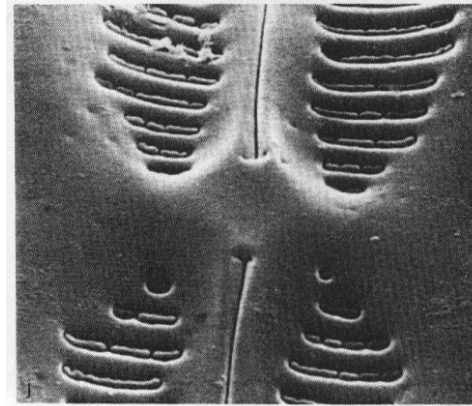
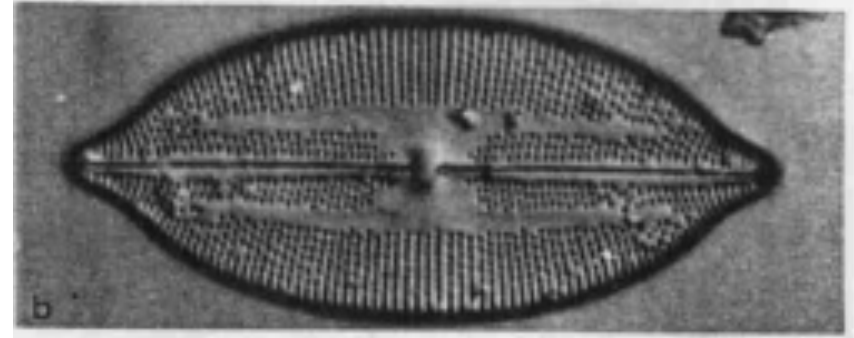
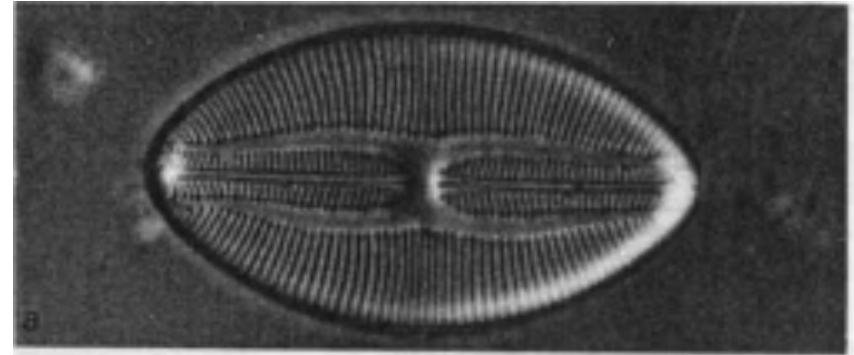
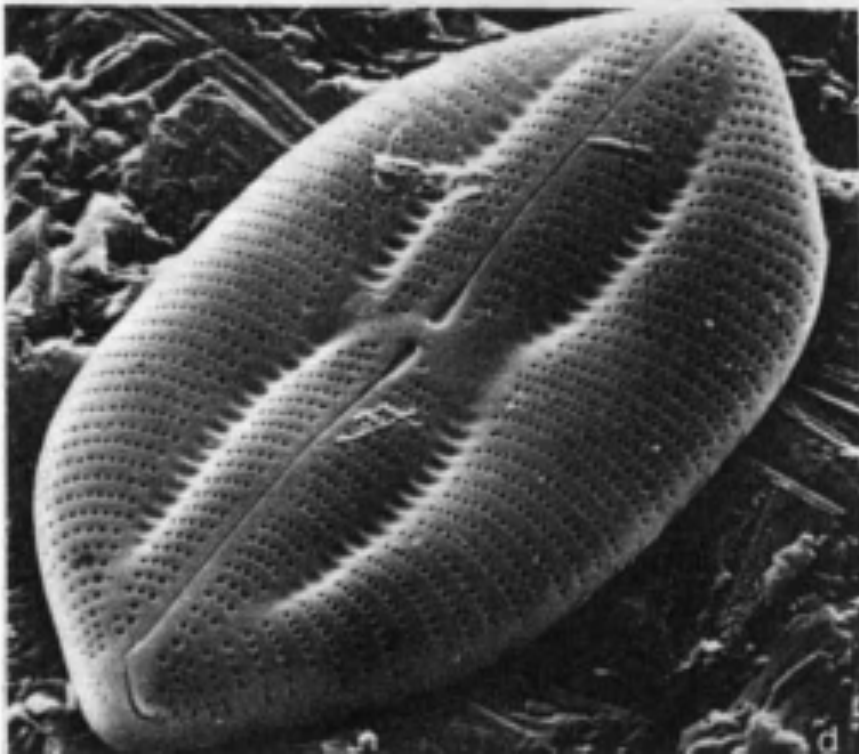


Achnanthidium, Rossithidium, Planothidium, Eucoconeis...

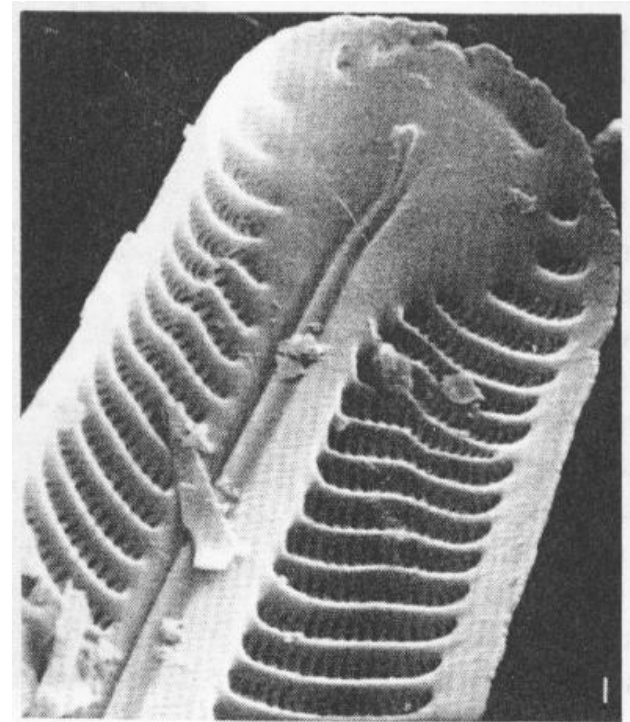
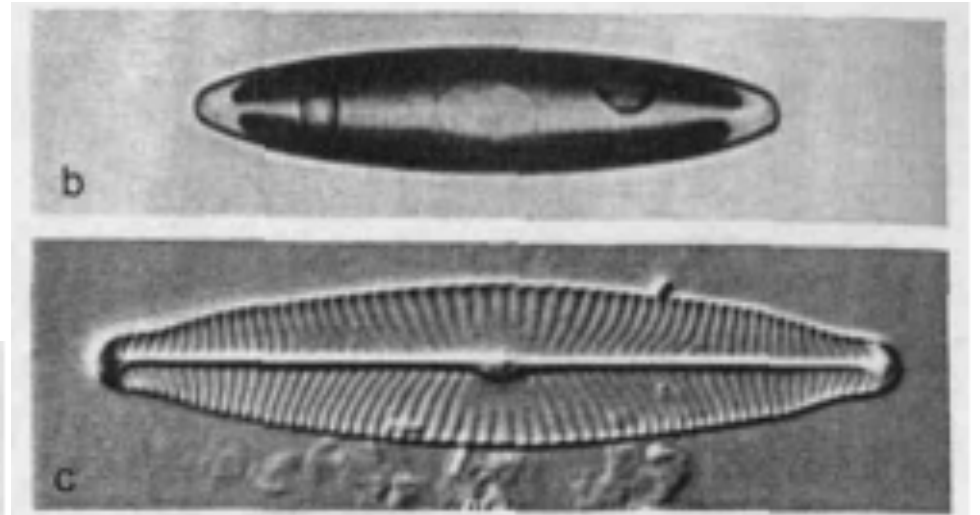
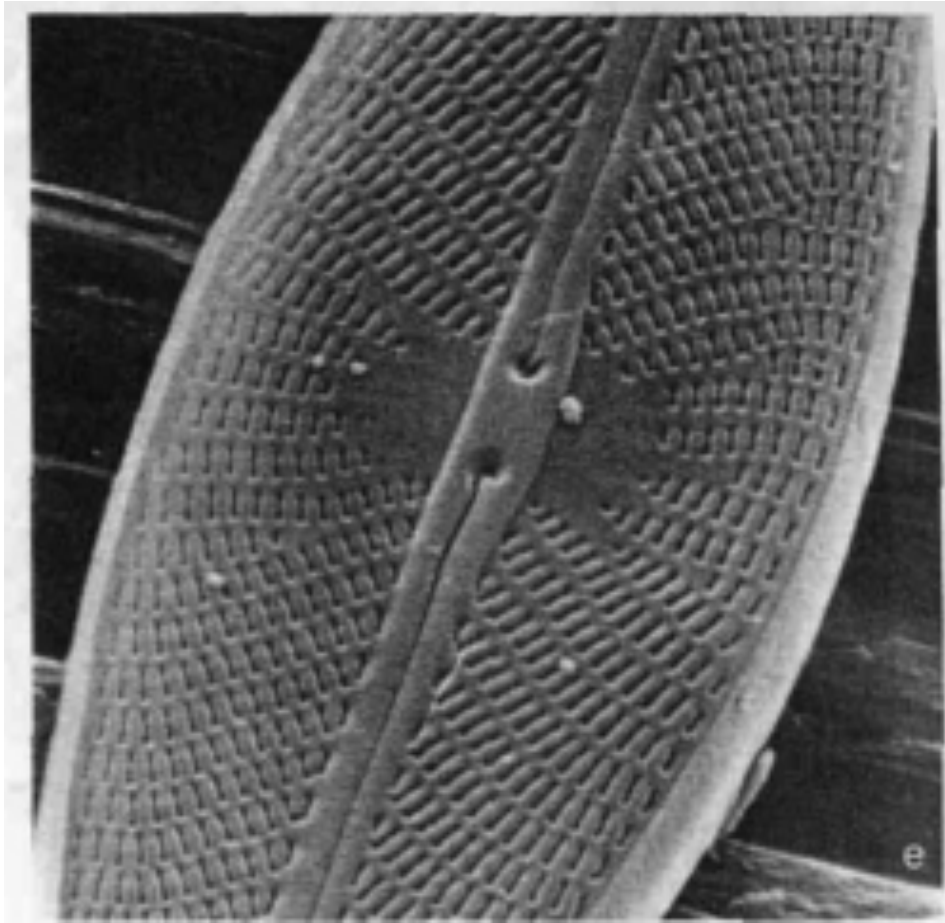
Eunotia



Lyrella

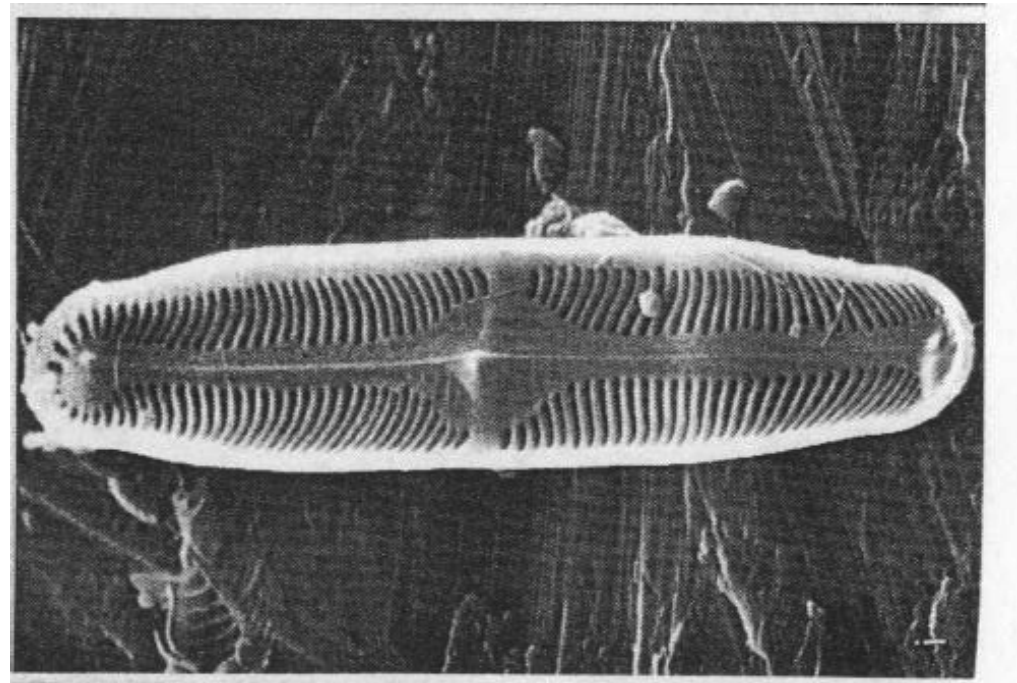
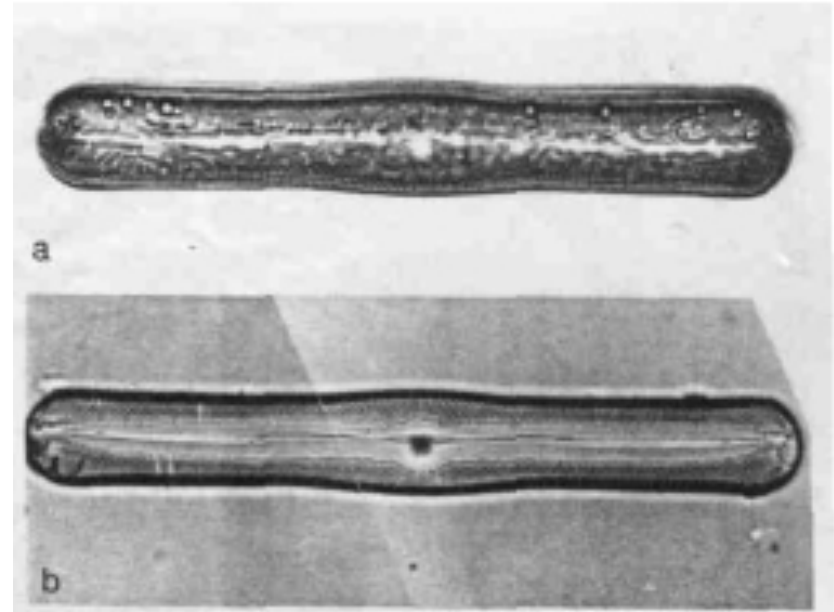
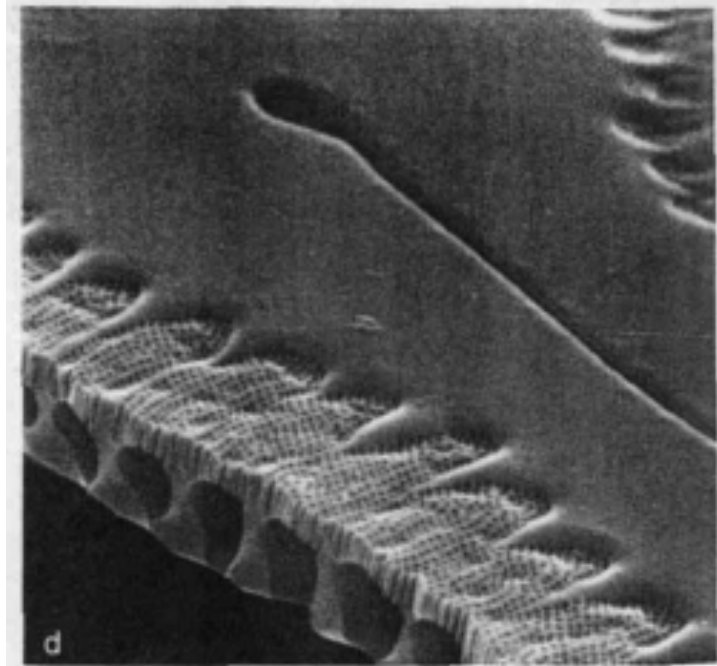


Navicula

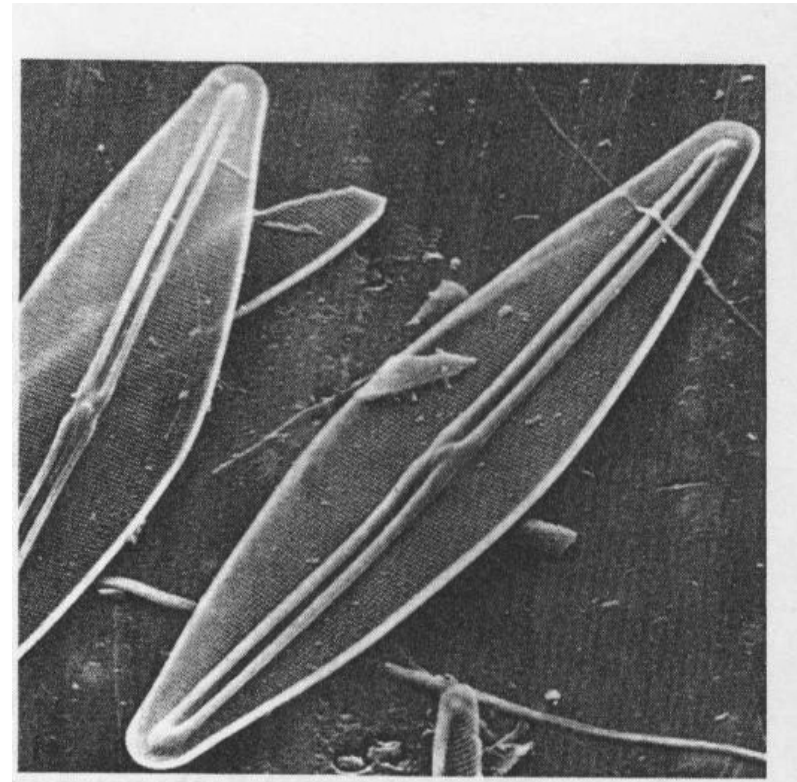
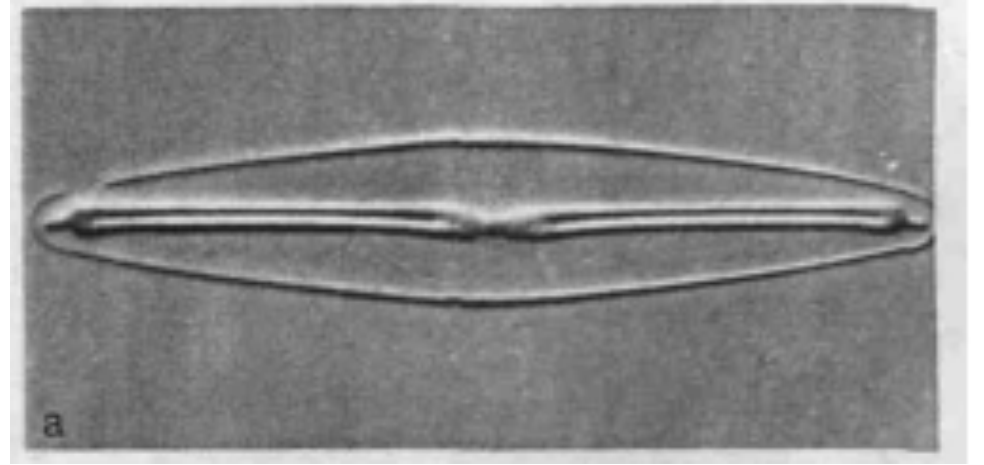
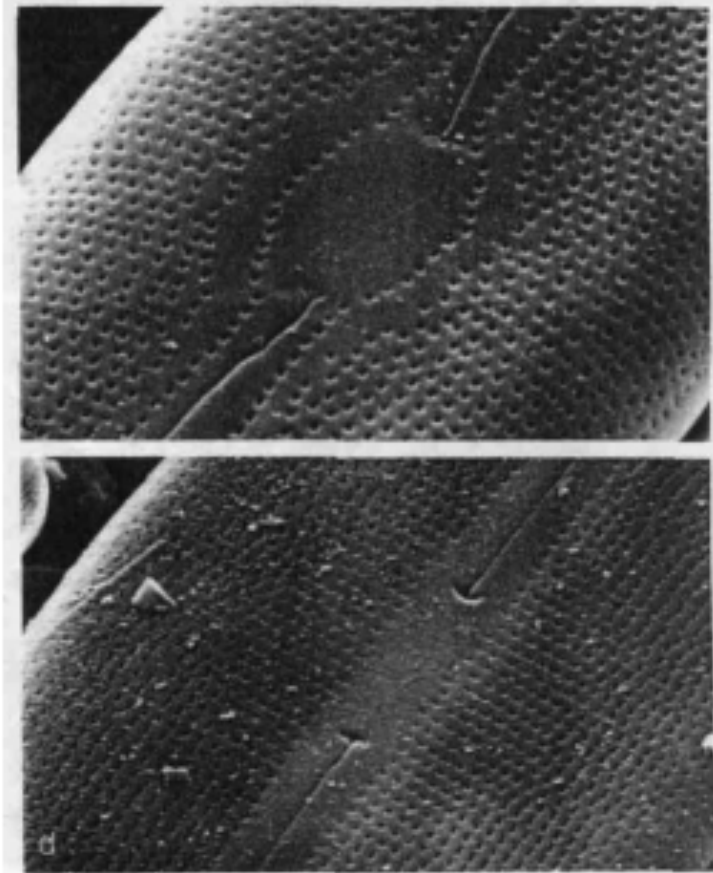


Luticola, Placoneis, Kobayasiella, Chamaepinnularia, Cavinula...

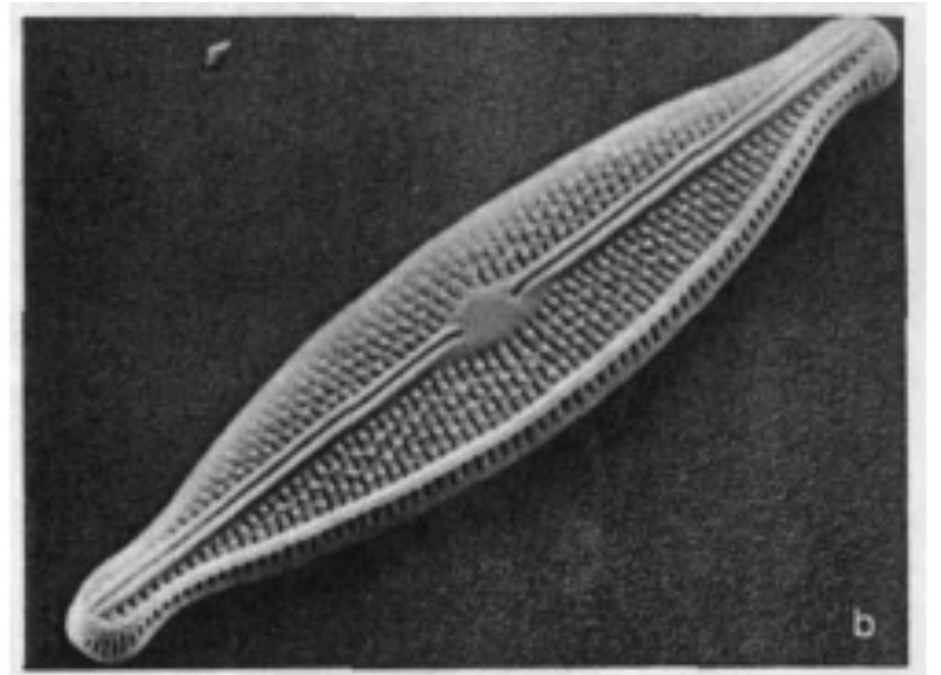
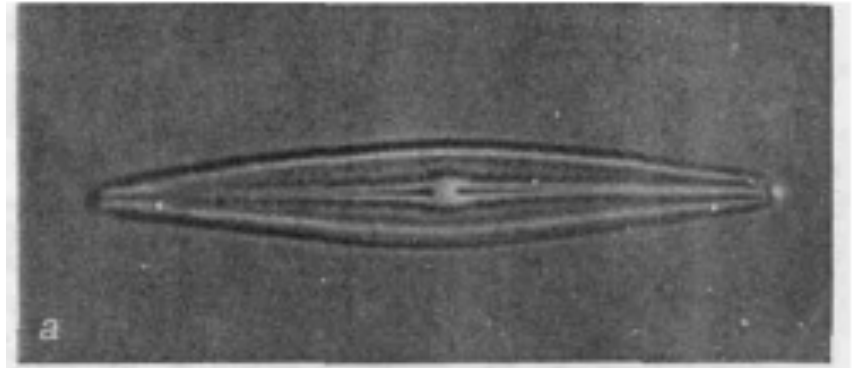
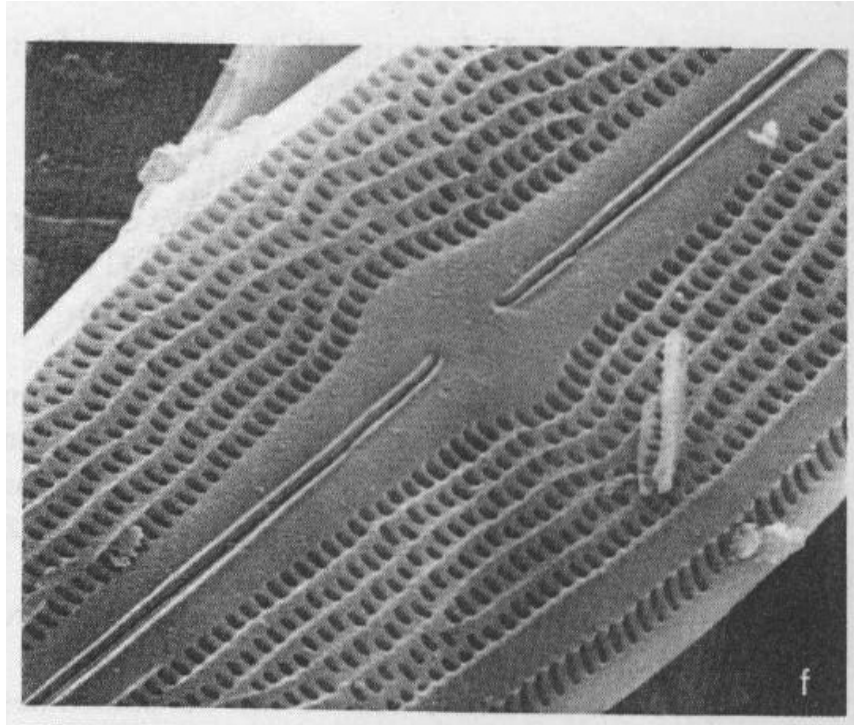
Pinnularia



Frustulia

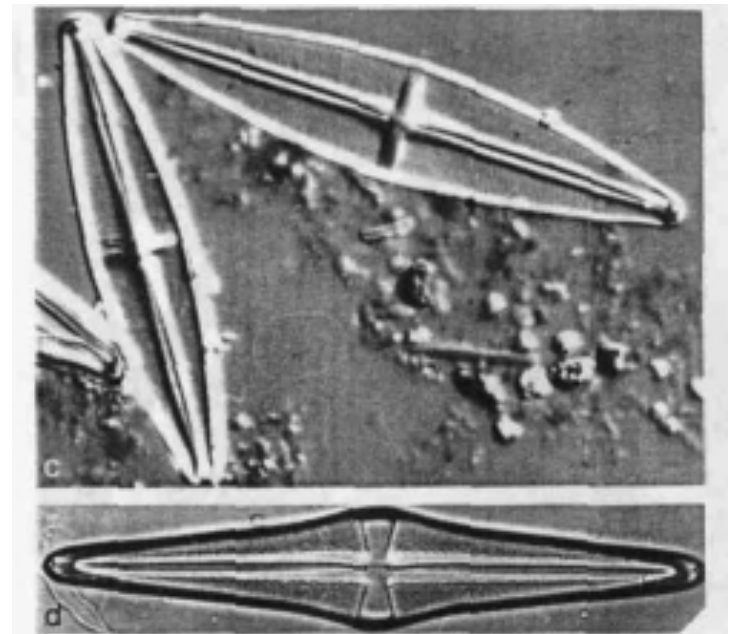
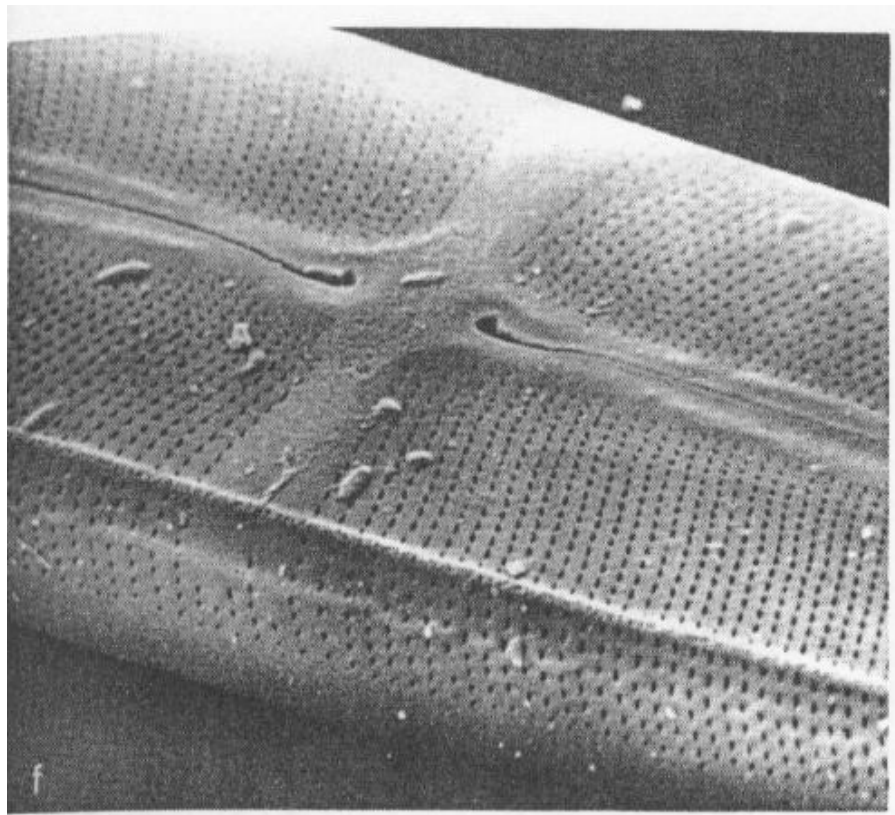
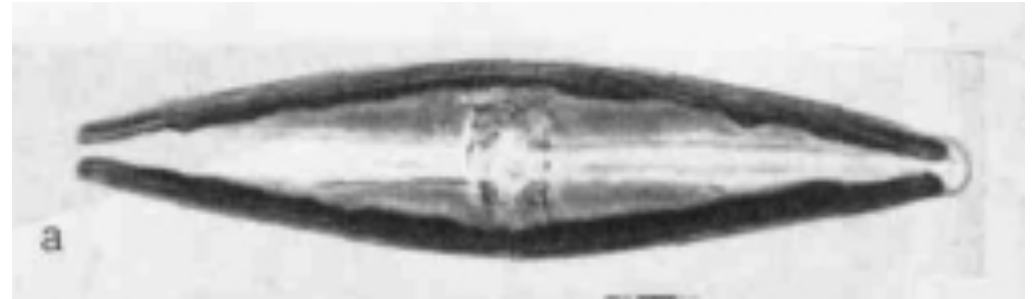


Brachysira

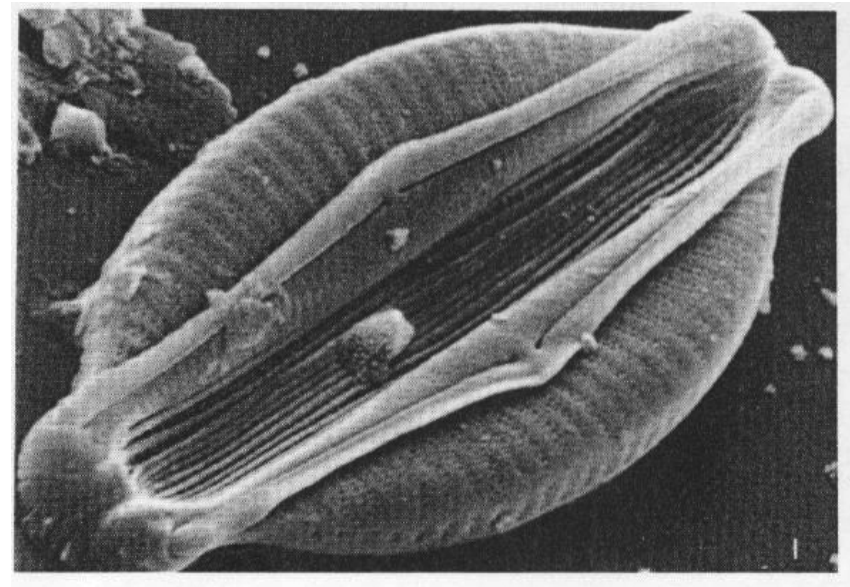
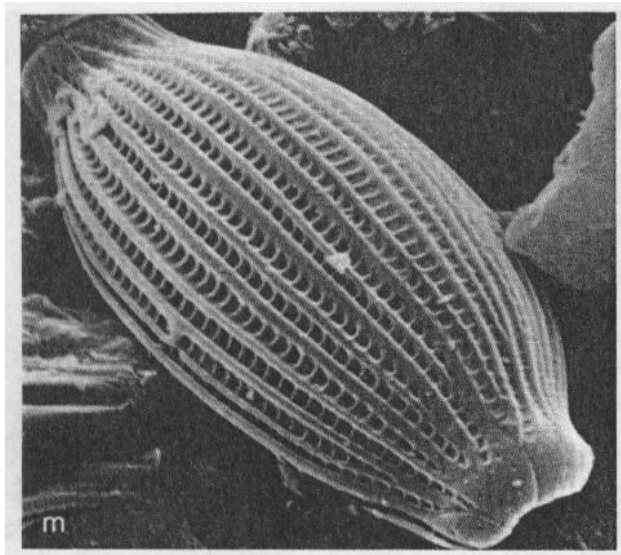
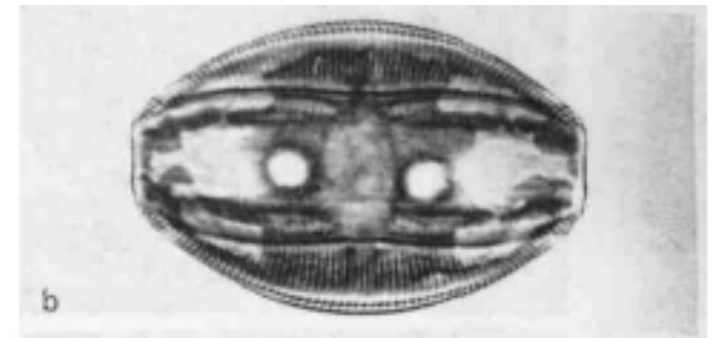
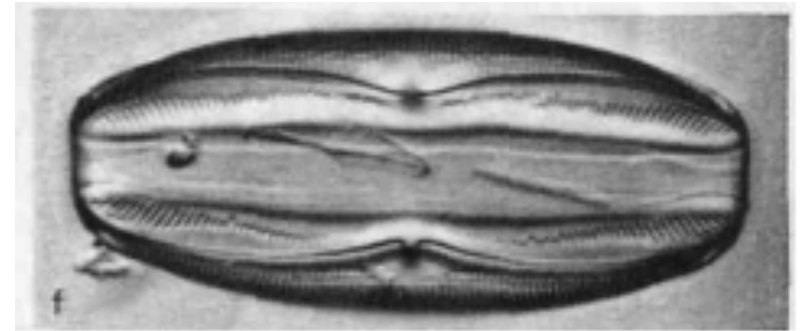
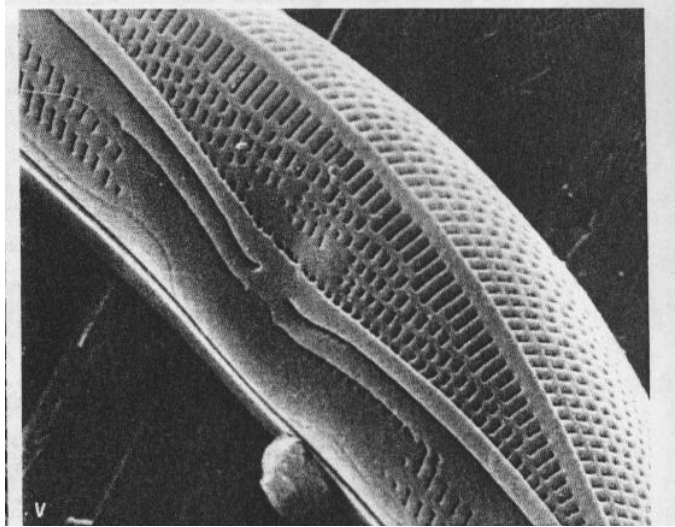


Anemoeoneis

Stauroneis

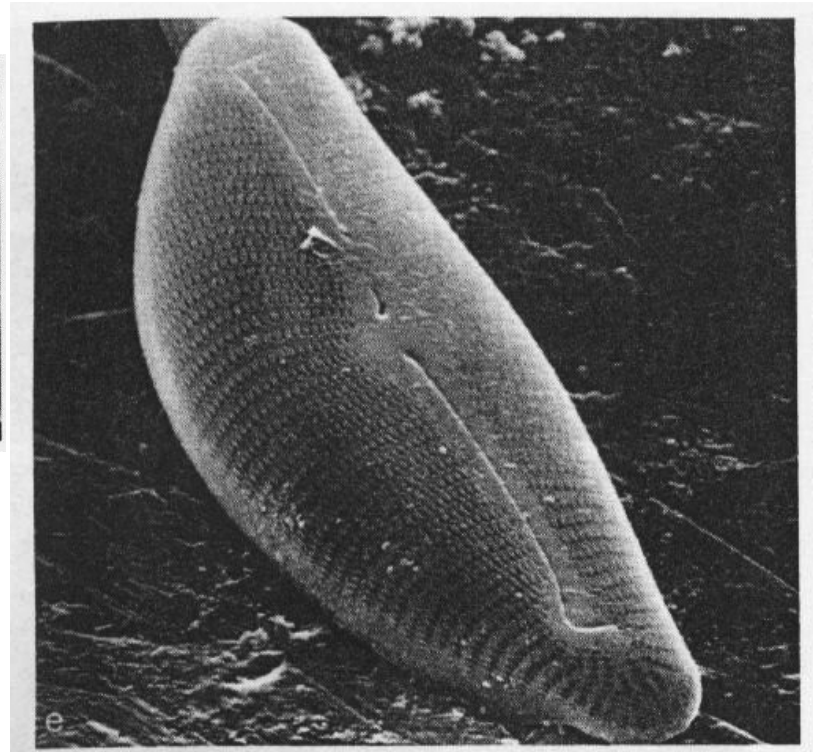
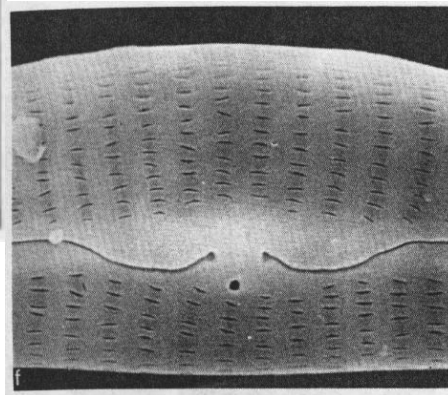
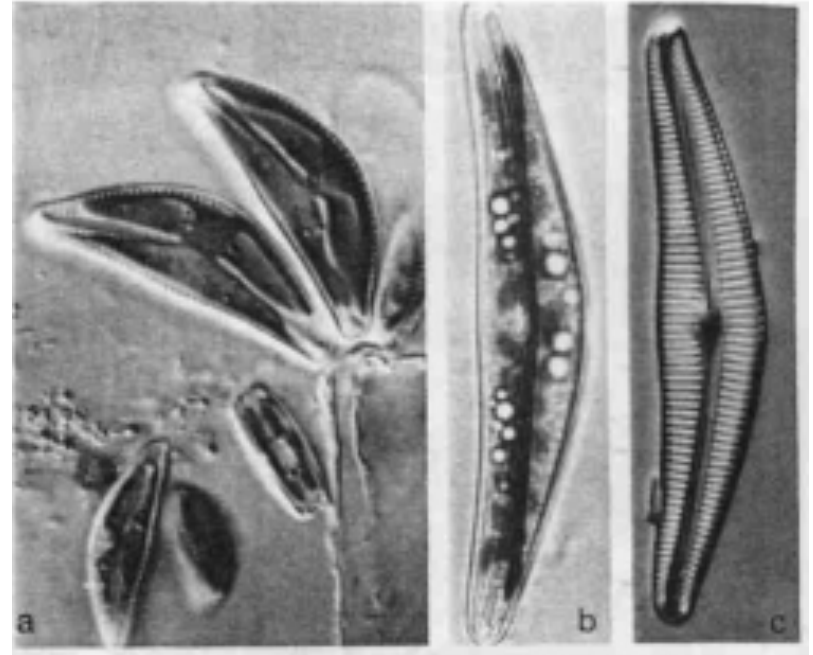
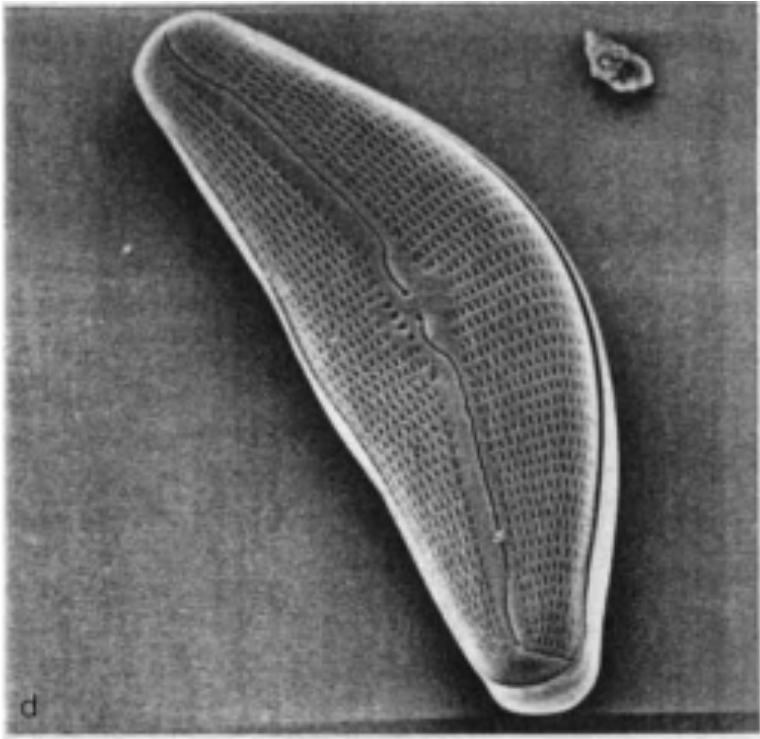


Amphora



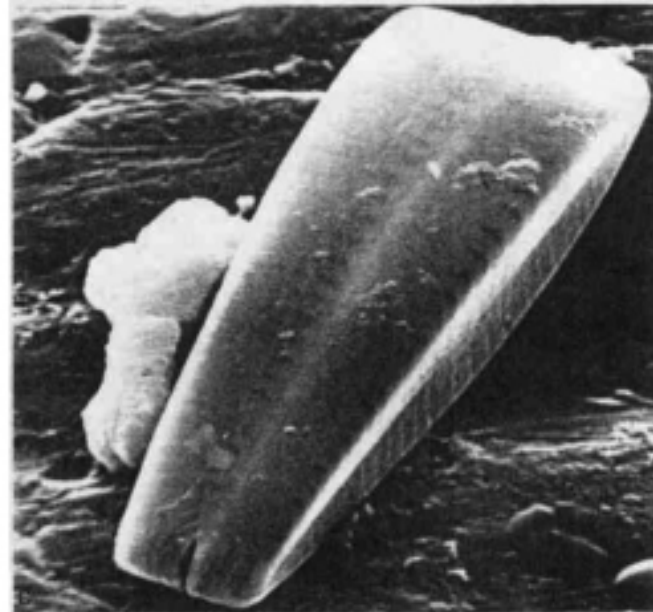
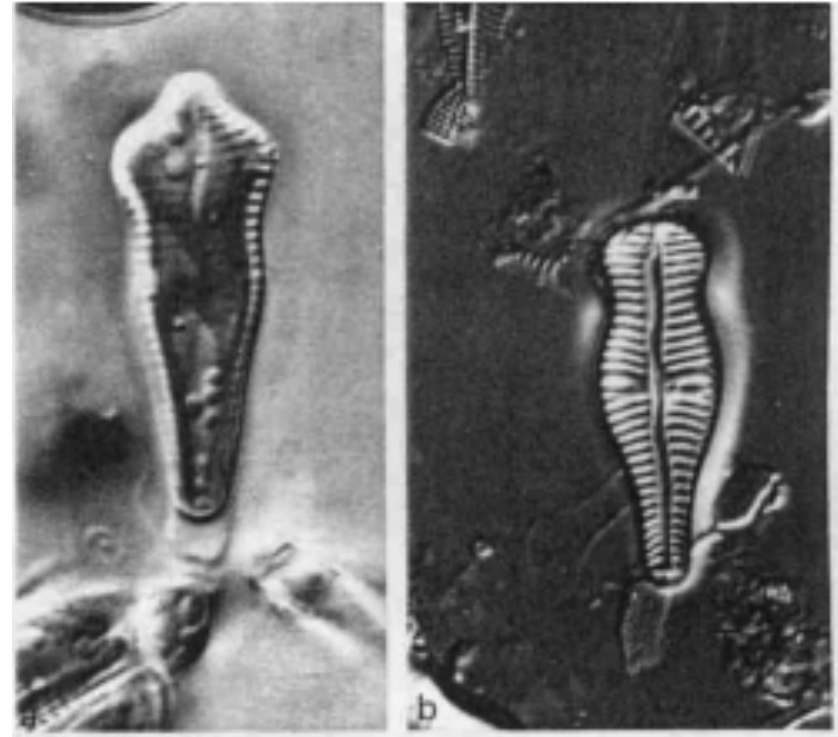
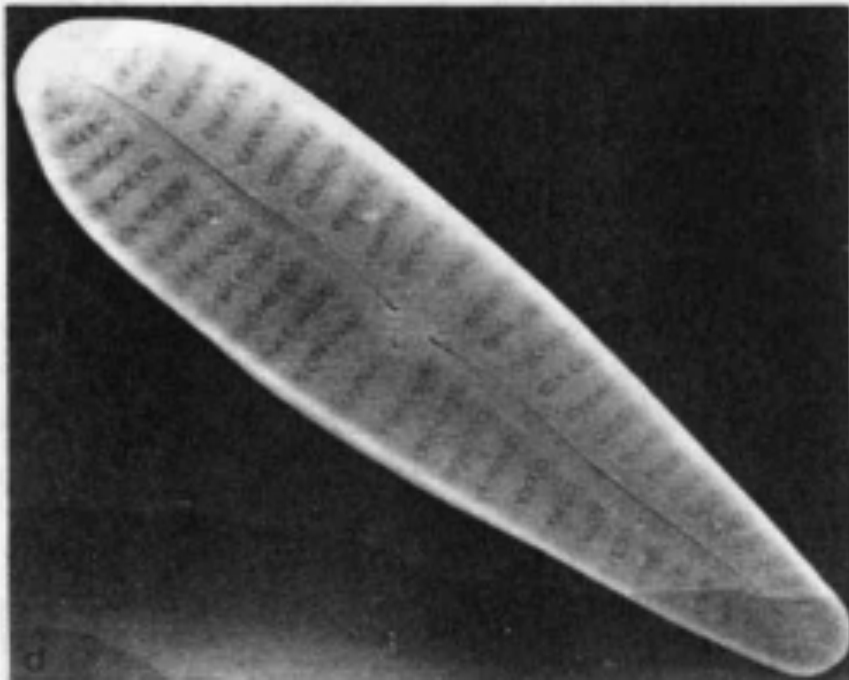
Halamphora

Cymbella / Encyonema



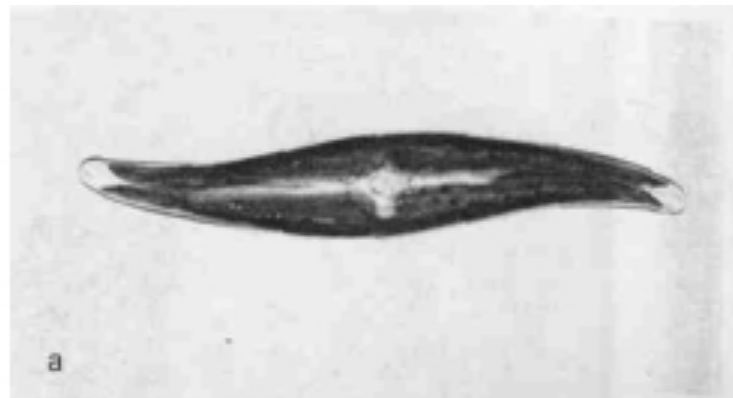
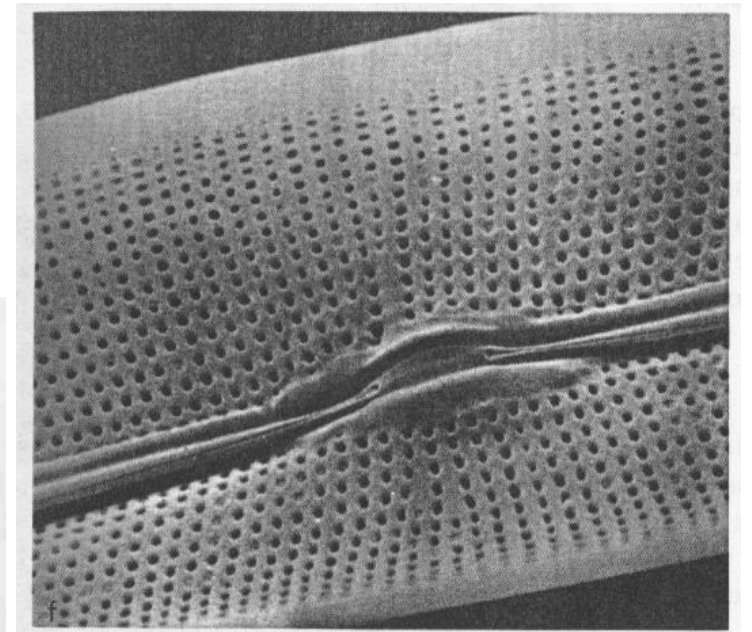
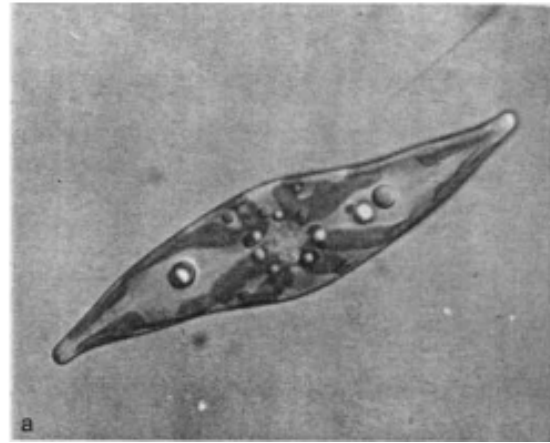
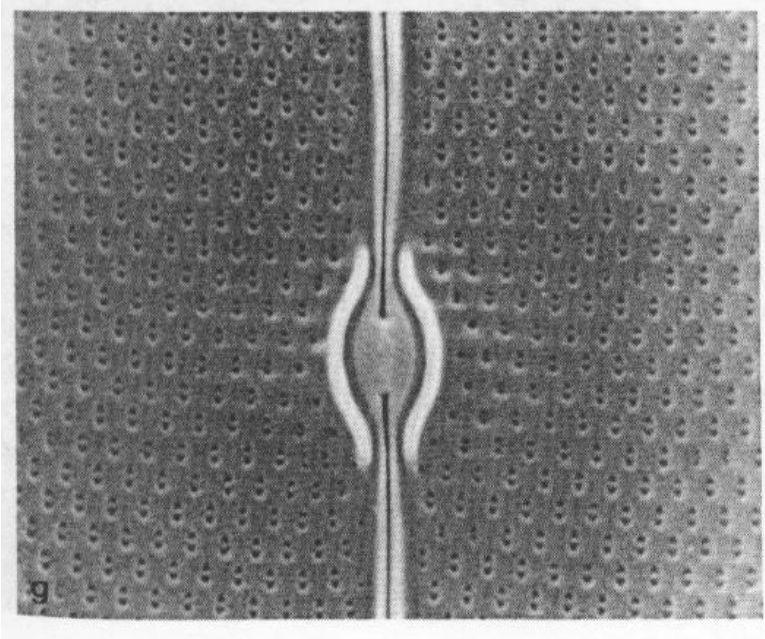
Cymbopleura, Delicatula...

Gomphonema

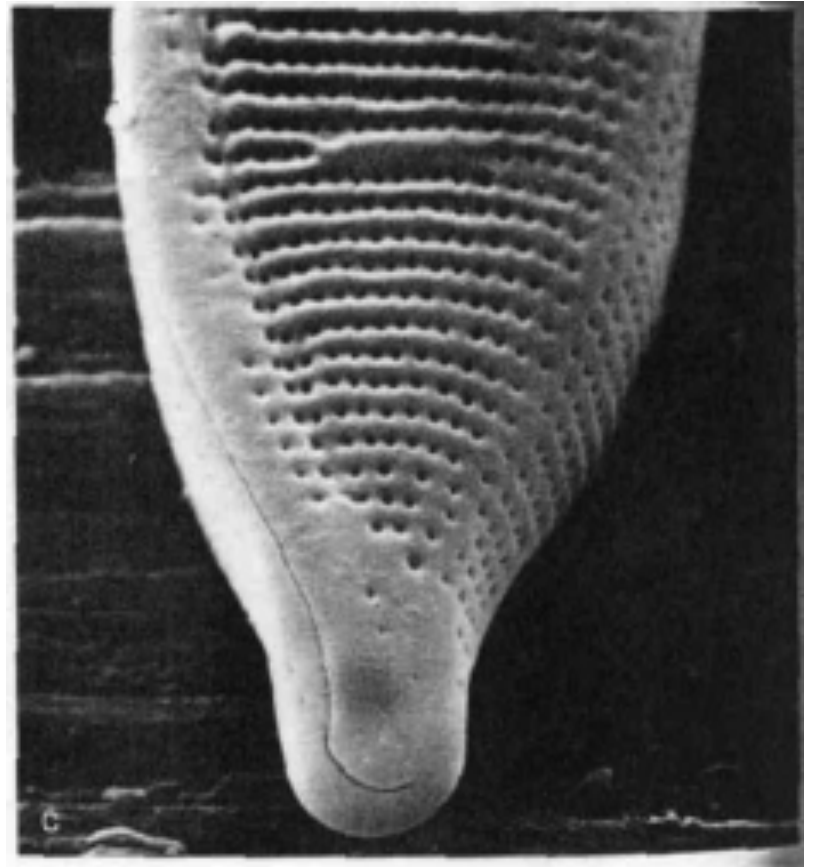
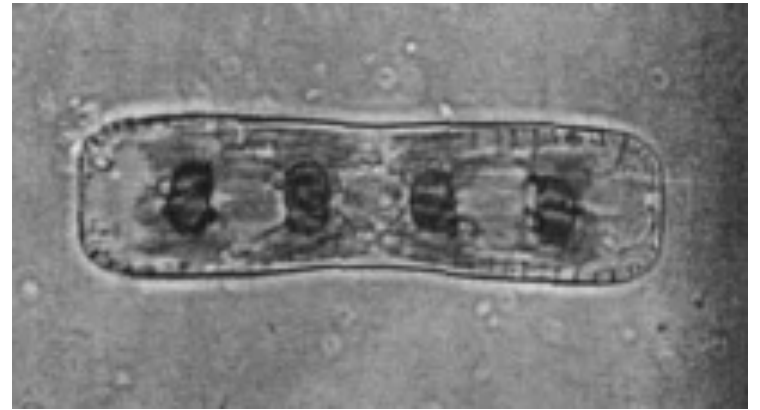
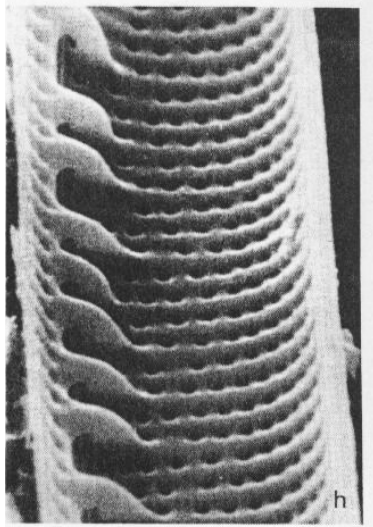
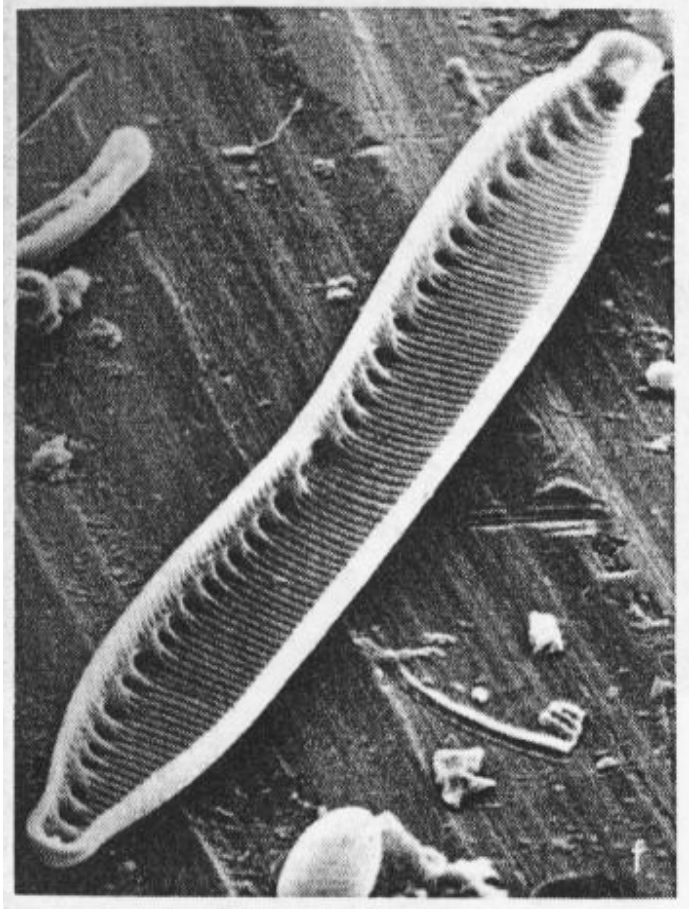


Gomphoneis

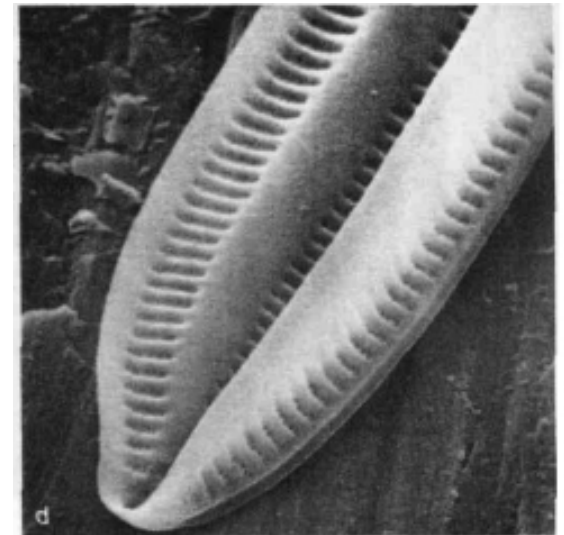
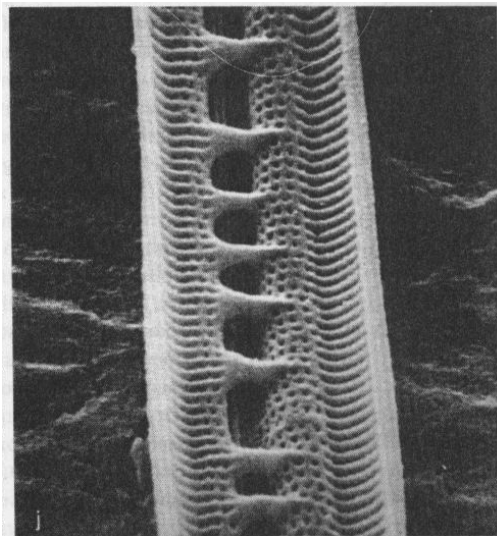
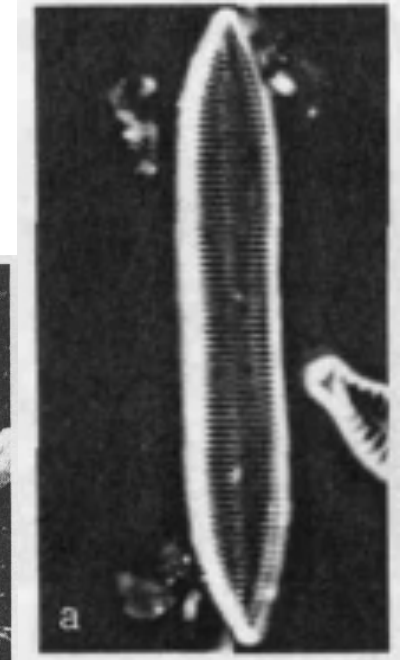
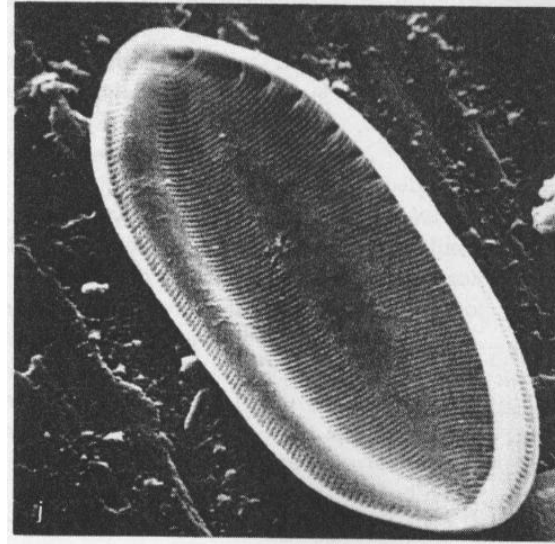
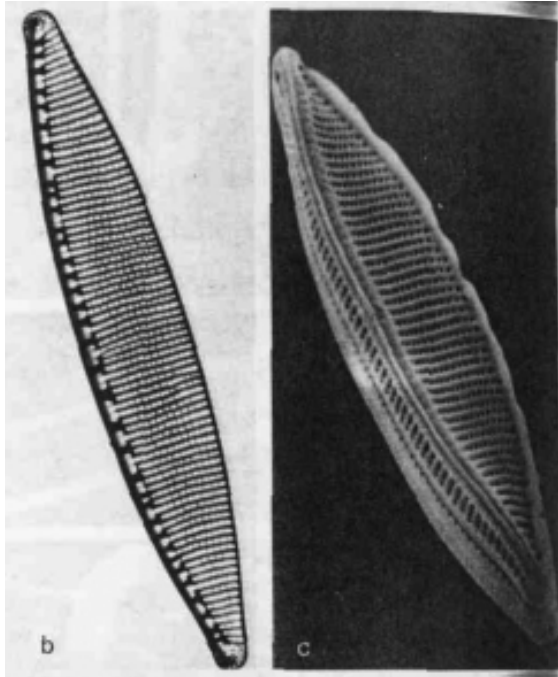
Pleurosigma / Gyrosigma



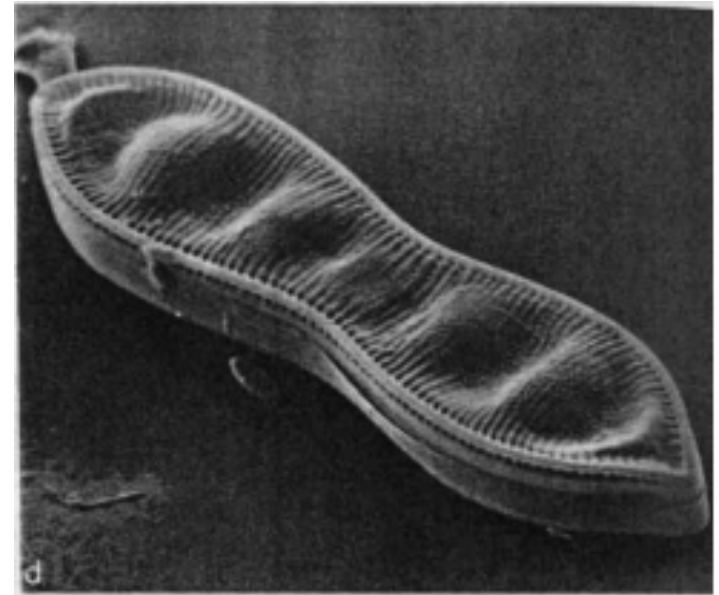
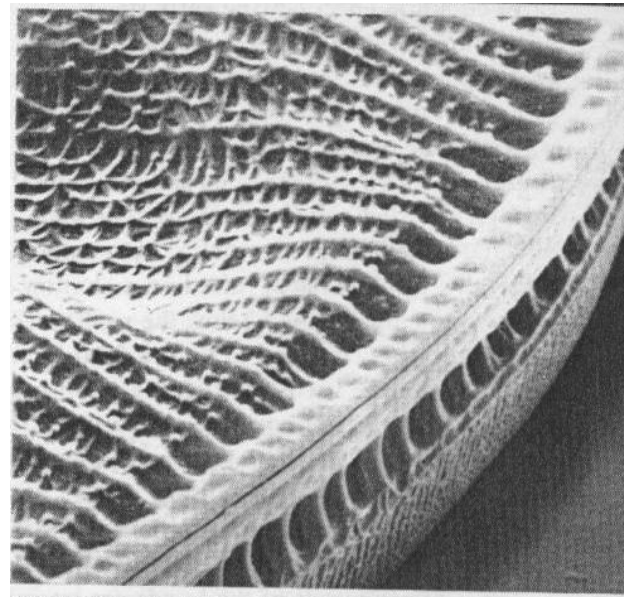
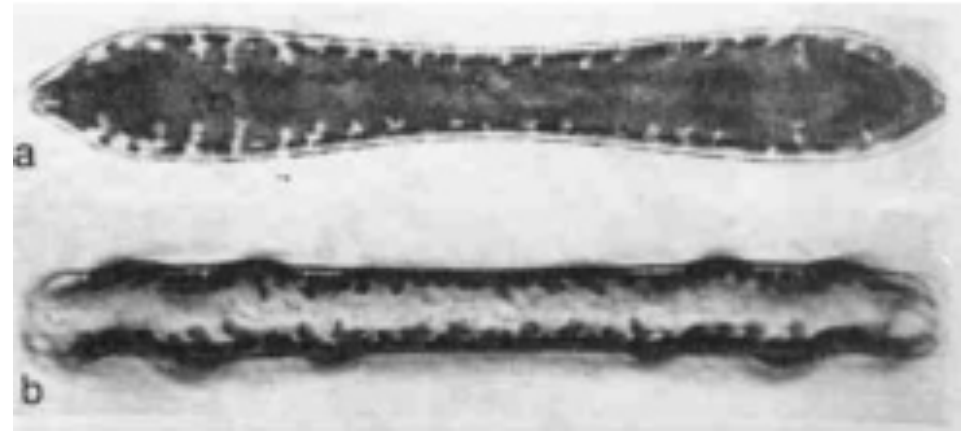
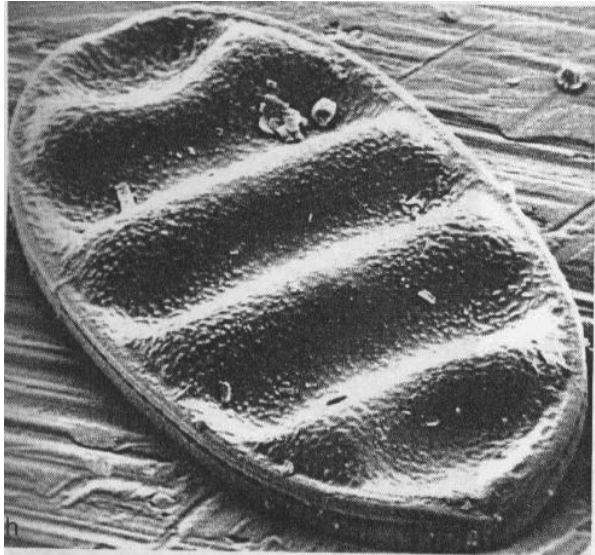
Hantzschia



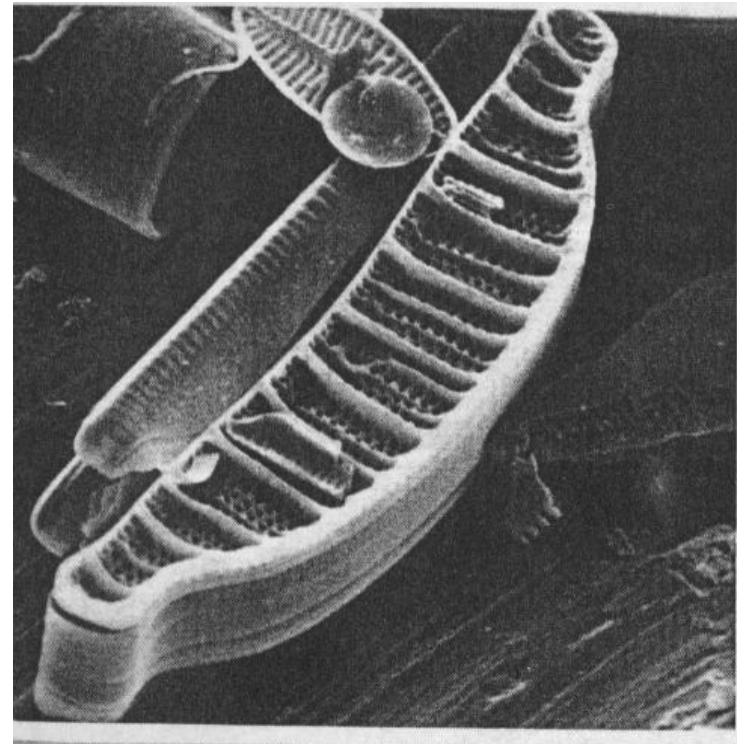
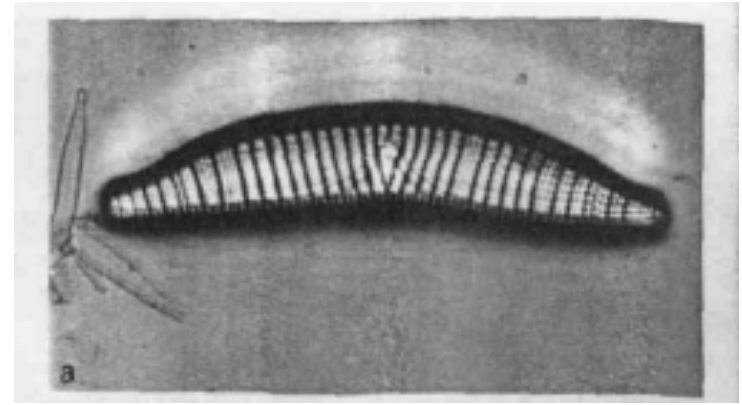
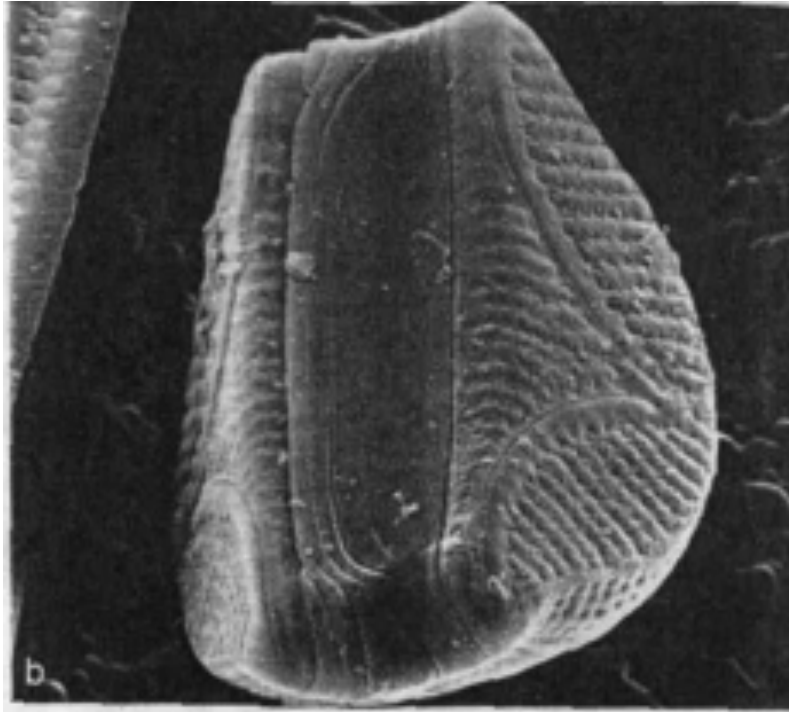
Nitzschia / Tryblionella



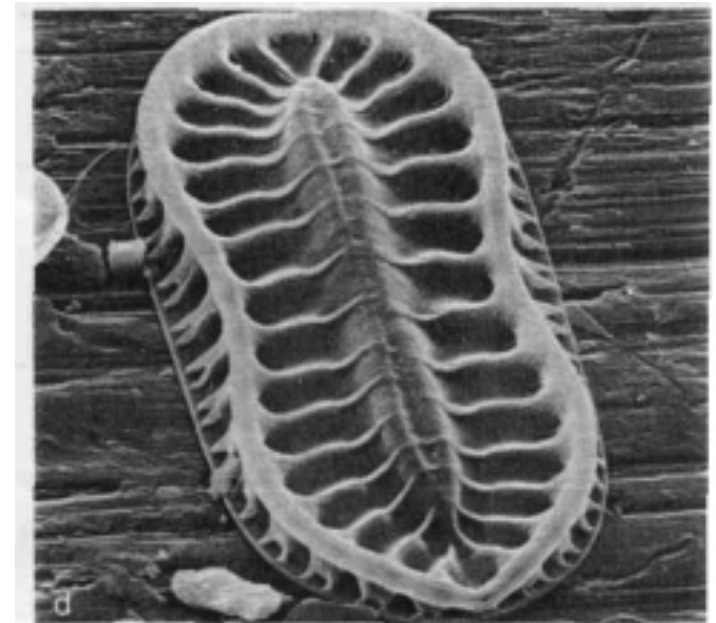
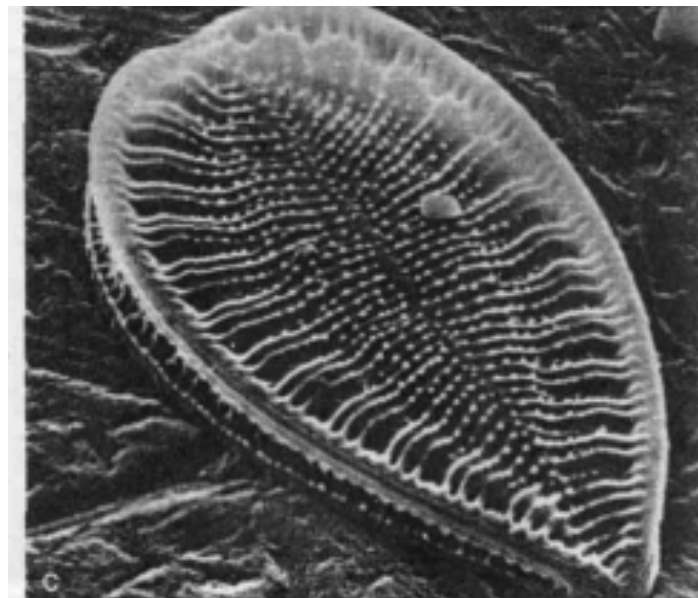
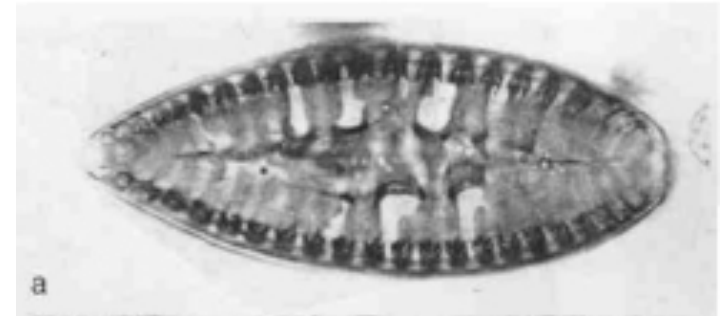
Cymatopleura



Epithemia



Surirella



Campylodiscus

