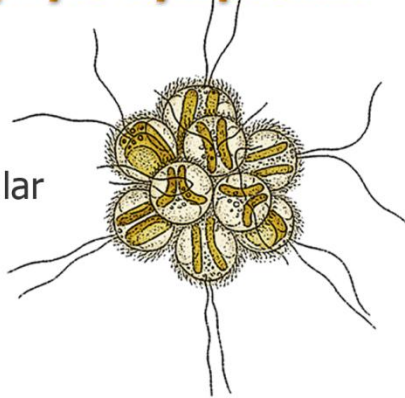


8th International Chrysophyte Symposium

2nd circular



Prague, Czech Republic,
12. - 17. August 2012

Department of Botany, Faculty of Science,
Charles University in Prague and Czech
Phycological Society.

On behalf of the Scientific Committee, we look forward to welcoming you to the 8th International Chrysophyte Symposium that will be held on August 12-17 at Faculty of Science, Charles University in Prague, Albertov 6, Prague, Czech Republic.

Topics

Species concepts and phylogeny – new advances and insights.

Biodiversity and distribution – geographic and ecological patterns.

Phenotypic plasticity and life cycle changes of heterokont algae.

Evolutionary genomics and phylogeny of stramenopiles.

Keynote Speeches

Peter A. Siver (Connecticut College, New London, Connecticut, USA): Do scaled Chrysophytes have a biogeography? Evidence from North America.

Thomas Weisse (Institute for Limnology, Mondsee, Austria): Sex, cysts, and local adaptation in freshwater protists.

Alexandra Z. Worden (Monterey Bay Aquarium Research Institute, California, USA): Eukaryotic algae and ecosystem dynamics.

Scientific Committee

Jørgen Kristiansen (Univ. of Copenhagen, DK)

Yvonne Němcová (Charles University, CZ)

Jiří Neustupa (Charles University, CZ)

Peter A. Siver (Connecticut College, USA)

Pavel Škaloud (Charles University, CZ)

Publication of proceedings

The proceedings will be published as a separate volume of the Nova Hedwigia Beiheft after the usual reviewing process. To be included in this special issue, papers must be submitted electronically no later than October 31 via e-mail of Jiri Neustupa: neustupa@natur.cuni.cz

Oral and Poster Presentations

Regular oral presentations will be 25 minutes, 20 minutes presentation + 5 minutes discussion. A session room is equipped for PC projection. The operating system is Microsoft Windows with the MS Office suite software. Posters should not exceed the A0 format. Panels for posters will become available from 8:30 on Monday, 13th August. The authors should shortly introduce (5-7 minutes) their posters at the beginning of the poster session.

Daily Schedule

Sunday 12 August 2012

16:00 - 20:00 : Registration

Monday 13 August 2012

8:00 - 10:00 : Registration

9:00 : Symposium opening

9:15 - 17:00 : Sessions

19:00 - 21:00 : Welcome party*

Tuesday 14 August 2012

9:00 - 17:00 : Sessions

17:00 - 19:00 : Poster session

19:00 - 21:00 : Beer trip

Wednesday 15 August 2012

9:00 - 17:00 : Excursions

19:00 - 20:30 : Microscopy session

Thursday 16 August 2012

9:00 - 17:00 : Sessions

19:00 : Farewell party

Friday 17 August 2012

9:00 - 16:00 : Optional Fieldtrip

Social events and excursions

Welcome Party – an open air evening at the Botanical Garden of the Faculty of Science (25 EUR).

Beer trip – tasting of different types of beers in traditional Prague pubs (no fee).

Farewell Party - a fine dining experience in the Nebozizek restaurant with a beautiful view of historical part of Prague (50 EUR).

Excursion 1 - Adolf Pascher's legacy - lowland bogs and cultural heritage of the Doksy region. Sampling of unique localities (field boots are recommended!) and lake boat cruise on Machovo jezero. This excursion includes a lunch in Doksy and optional participation on the evening microscopic session in Prague (50 EUR).

Excursion 2 – guided Prague City Sightseeing Tour & Boat Trip. The historical areas of the city centre: the New and Old Town, Prague Castle, the Jewish Quarter (60 EUR).

Optional Fieldtrip – the town of Kutná Hora, UNESCO world cultural and natural heritage.

Kutná Hora is situated approximately 60 km east of Prague. The sources of the beauties and riches are in the silver mines that were exploited most intensively in the 14th and 15th century. During this excursion you will see interesting and most impressive sights as the unique Gothic Cathedral of St. Barbara (no fee).

Arrival

Taxi service. AAA taxi has a special offer if you ask for 47% discount during ordering a taxi (<http://www.aaataxi.cz/Prices/>). Taxi cars that are not ordered but taken directly at the street have regular prices.

If necessary, personal assistance during transportation from the airport may be provided. Please contact Pavel Skaloud (e-mail address: skaloud@natur.cuni.cz; tel: 00420-732-237- 065) at least a day before your arrival to Prague.

Public transportation from Ruzyne airport. You have to buy a ticket in a ticket vending machine before you enter the bus. Ticket for 32 CZK will be valid in bus, tram and metro lines of Prague Integrated Transport for 90 minutes after validation in a marking device inside the first

* Welcome party will be held in the Botanical Garden of the Faculty of Science. Please, see the enclosed maps.

vehicle. Exception is the bus line AE where drivers sell the tickets inside the bus (60 CZK). All buses take you to metro stations: line 119 (metro A), line 100 and line 179 (metro B), line AE (metro A, B, C). For more details see: <http://www.dpp.cz/en/daytime-operation/>

The closest metro stations to the symposium venue are *Karlovo náměstí* (metro B) and *I.P. Pavlova* (metro C). The tram stop, which is called *Albertov* (lines: 24, 18, 7), is even closer to the symposium venue

The central bus station and the main Prague train station are connected by metro, *Florenc* (B, C) and *Hlavní nádraží* (C) respectively.

It is possible to find more details about public transport via internet: <http://www.dpp.cz/en/>

Positions of stations and stops of public transport near the symposium venue are marked on enclosed maps.

Accommodation

A list of recommended hotels can be found at: <http://botany.natur.cuni.cz/ics/accommodation.html>

Dormitory Petrska, with English speaking receptionist, Petrska 3, Prague, tel.: 00420-222-315-189; GPS coordinates: 50.0913492N, 14.4327481E; please see the enclosed map

Pension Vysehrad, with English speaking receptionist, Krokova 6, Prague, tel.: 00420-241-408-455; GPS coordinates: 50.0628789N, 14.4250669E; please see the enclosed map; <http://www.pension-vysehrad.cz/eindex.html>

Registration

The registration desk will be opened on Sunday from 16:00 to 19:00 and on Monday from 8:00 to 10:00 at the entrance hall of the Symposium venue building (Albertov 6).

Important Addresses and Contacts

Faculty of Science, Charles University in Prague, Albertov 6, Prague, GPS: 50.0688908N, 14.4244869E

Botanical Garden, Faculty of Science, Charles University in Prague, Na Slupi 16, Prague, GPS: 50.0714650N, 14.4208631E.

Yvonne Nemcova, Department of Botany, Faculty of Science, Charles University in Prague, Benatska 2, Prague, tel.: 00420-721-322-477 or 00420-221-951-647; e-mail: ynemcova@natur.cuni.cz

Proposals for ICS9

We would like to ask scientists (groups) interested in hosting the next ICS9 to prepare a short Power-point presentation to outline the advantages of the proposed location. Proposals will be evaluated by the Scientific Committee during ICS8 in Prague.

Symposium Details

<http://botany.natur.cuni.cz/ics>

Acknowledgement

Federation of European Phycological Societies
<http://www.feps-algae.org/>

Nikon Corporation; <http://www.nikon.com>

Faculty of Science, Charles University in Prague
<http://www.natur.cuni.cz/faculty-en>



Stops and stations of public transport and location of the Symposium Venue and Welcome Party.

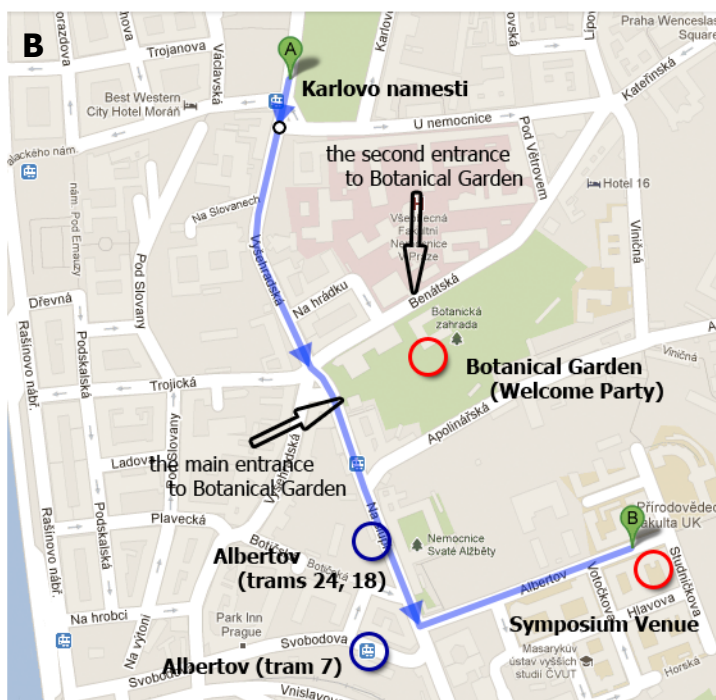
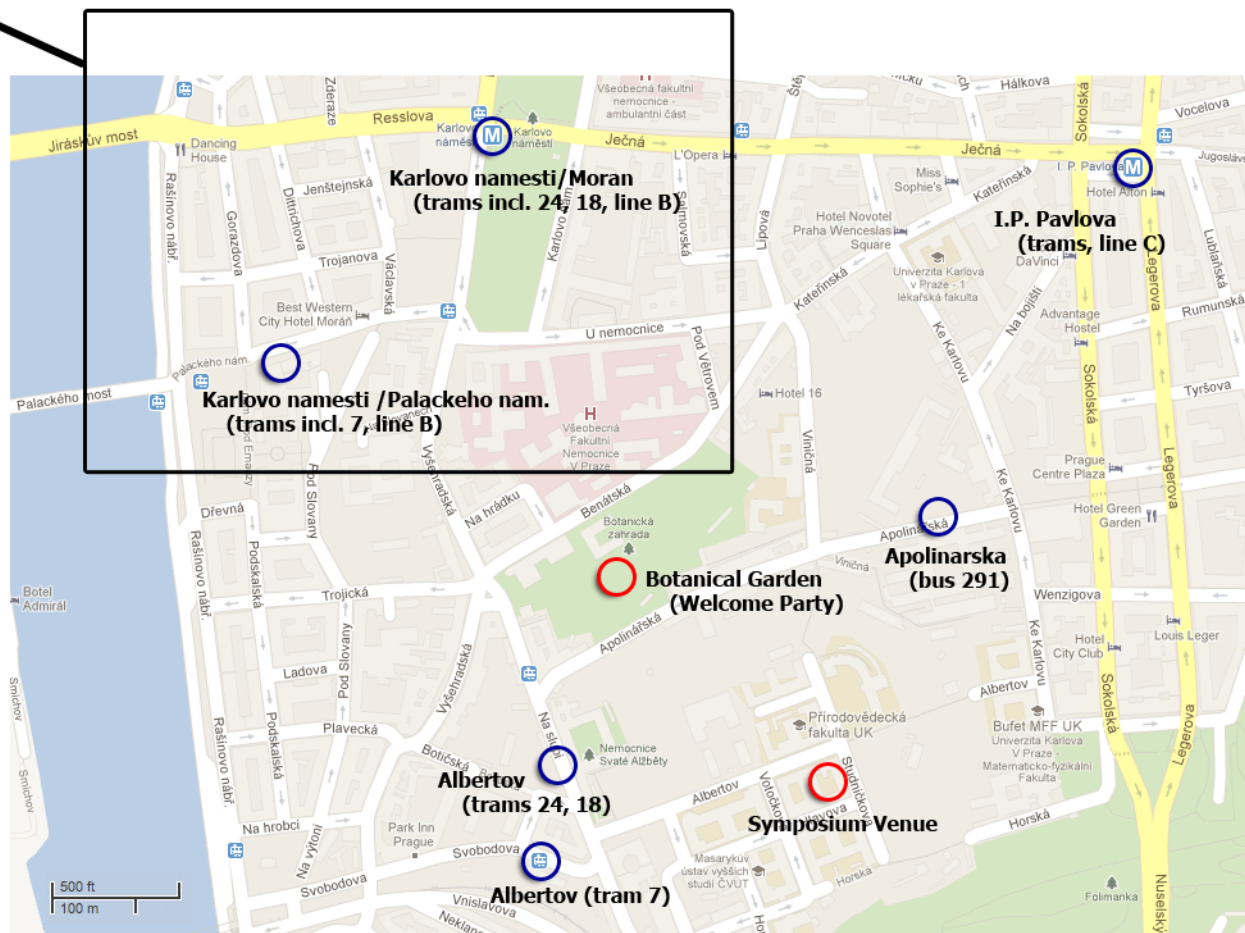


FIGURE A: Detailed positions of stops/stations of public transport and FIGURE B: visualization of walk from Karlovo náměstí to Welcome Party Venue (street Na Slupi 16 or Benatska 2) and to Symposium Venue (street Albertov 6).

Stops and stations of public transport and location of the Symposium Venue and Welcome Party.

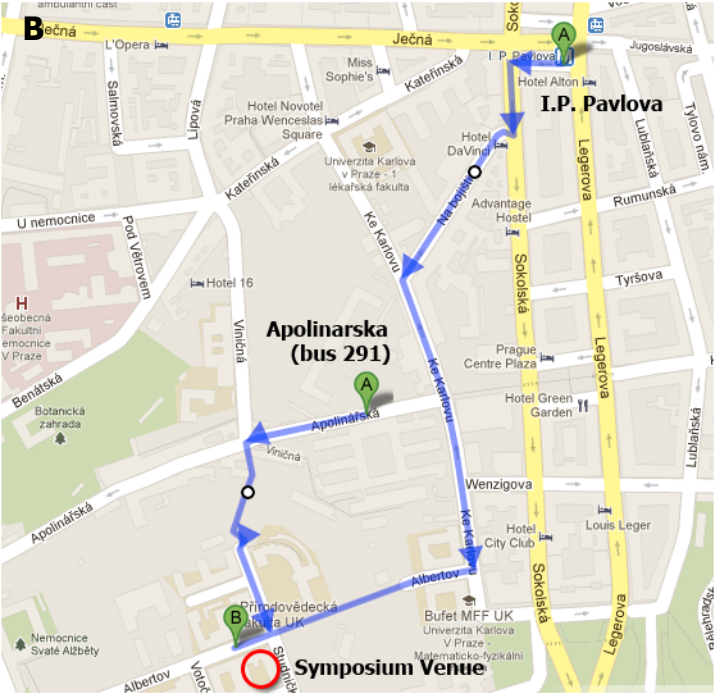
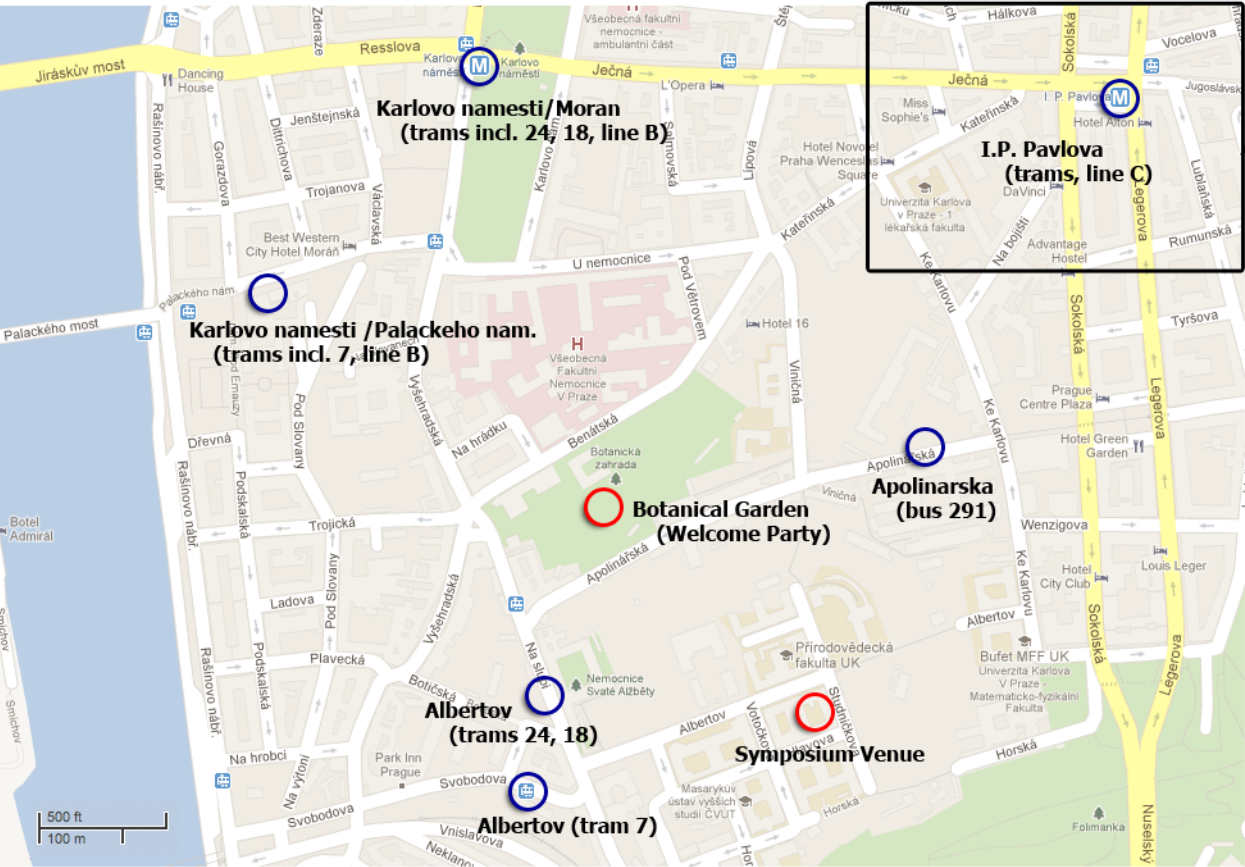
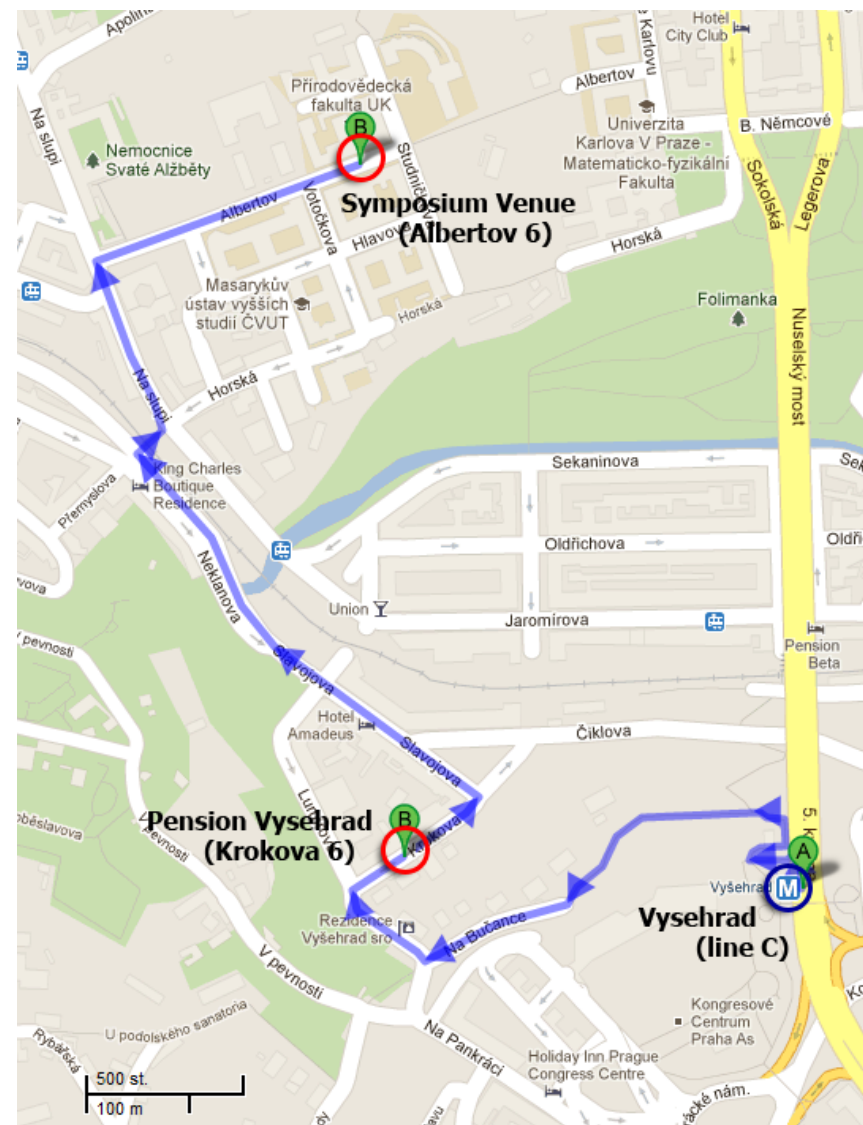


FIGURE A: Detailed positions of stops/stations of public transport and FIGURE B: visualization of walk from I.P. Pavlova to Symposium Venue (street Albertov 6).



Stops and stations of public transport near the Dormitory Petrška.

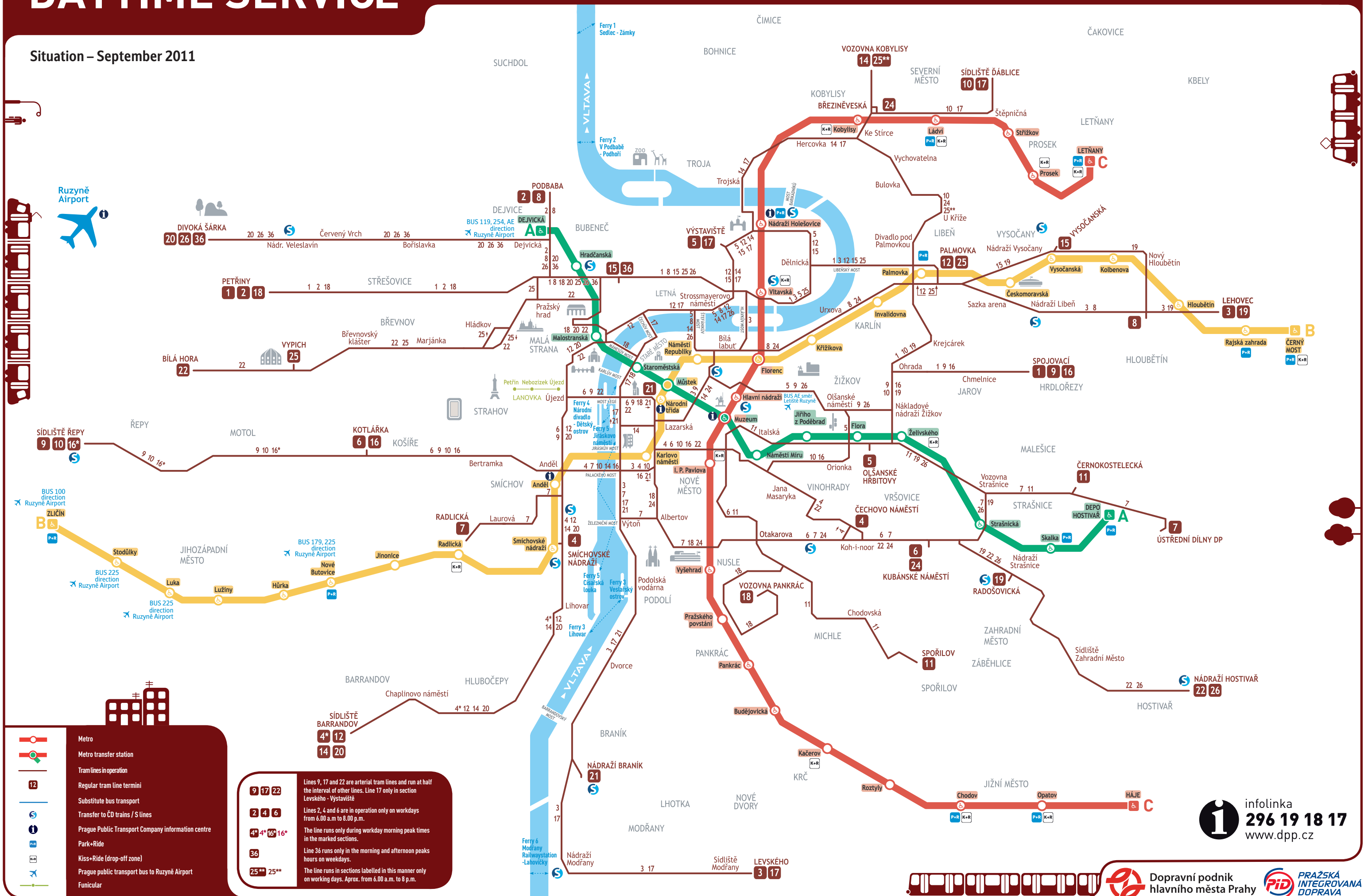


The shortest walk to/from Pension Vyšehrad.

DAYTIME SERVICE

METRO AND TRAMS PRAGUE INTEGRATED TRANSPORT

Situation – September 2011



Lines 9, 17 and 22 are arterial tram lines and run at half the interval of other lines. Line 17 only in section Levského - Vystaviště

Lines 2, 4 and 6 are in operation only on weekdays from 6.00 a.m. to 8.00 p.m.

The line runs only during weekday morning peak times in the marked sections.

Line 36 runs only in the morning and afternoon peaks hours on weekdays.

The line runs in sections labelled in this manner only on working days. Approx. from 6.00 a.m. to 8 p.m.

infolinka
296 19 18 17
www.dpp.cz