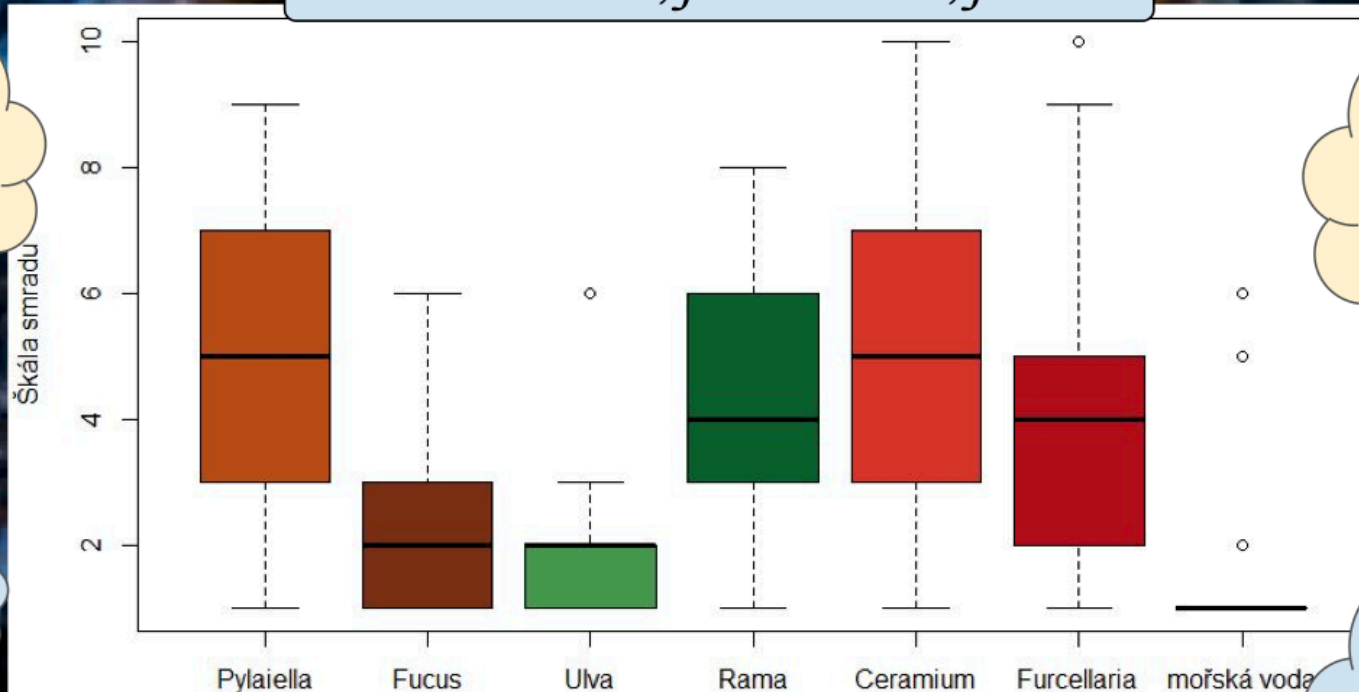


The worst of the wrack: taxonomic influence on the olfactory experience of the beach wrack

Václav Cedrik Belza, Jane Scalabroni, Jonáš Lis



Algae with fine thallus are the stinkiest.

The hypothesis that ephemeral algae stink more has not been confirmed.

Ulva stinks more for men than for women.

Participants stating that they would not enter the sea due to the strong presence of beach wrack were significantly repelled by the smell of Ceramium tenuicorne.



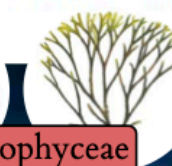
Phaeophyceae



Ulvophyceae



Florideophyceae



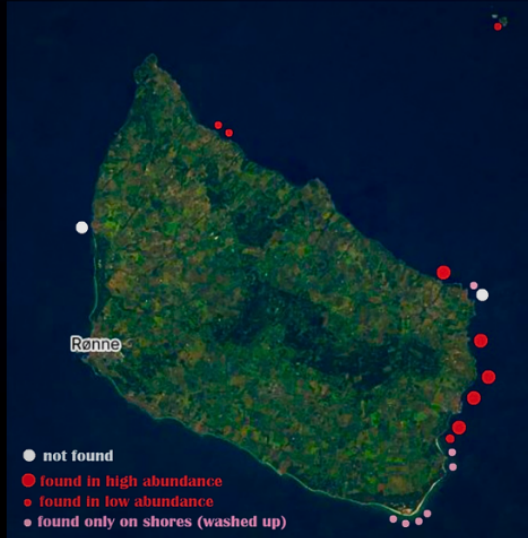
EPHEMERAL
FINE THALLUS



Extraction of carrageenan from *Furcellaria lumbricalis*

Barbora Kociánová,
Žaneta Chlumská, Sofie Daigrová

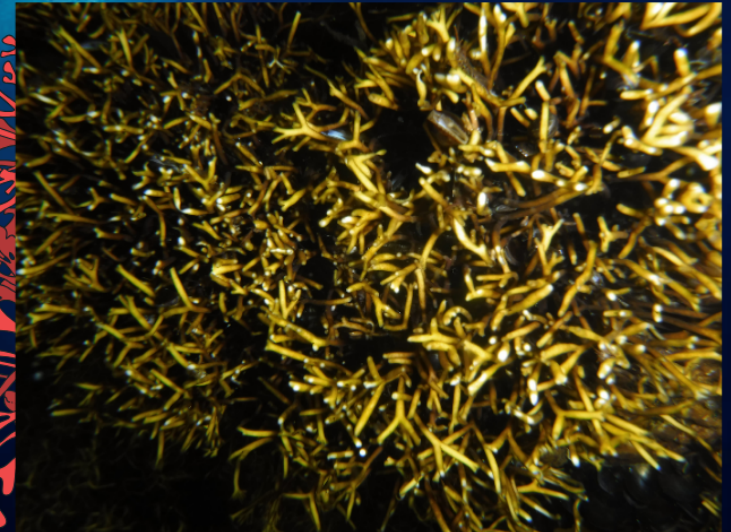
Distribution of *Furcellaria lumbricalis*



Furcellaran (carrageenan of *Furcellaria* sp.) was successfully extracted, although to rule out any possible contaminations by any other polysaccharide, mass spectroscopy would be needed



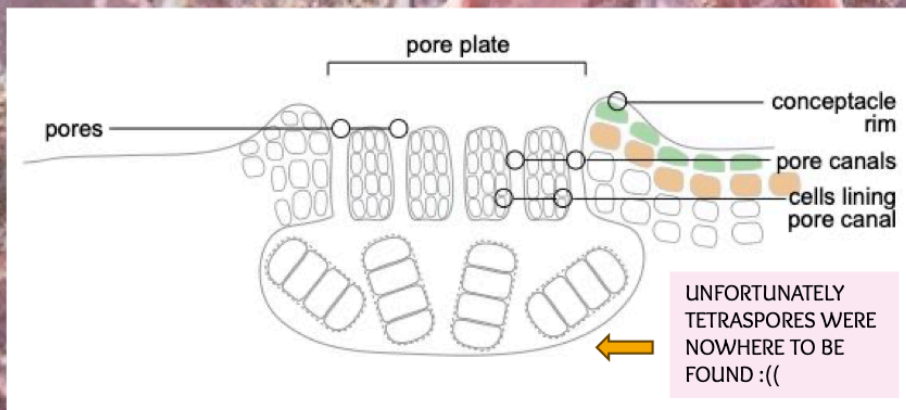
Furcellaria lumbricalis



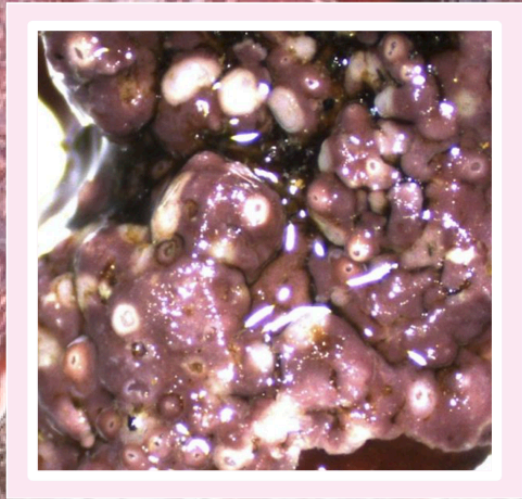
Extraction of furcellaran step by step



SEXUAL REPRODUCTION OF PHYMATOLITHON LENORMANDII IN THE BALTIC SEA. DOES IT EVEN HAPPEN?



IT SEEMS THAT DESPITE COLDER TEMPERATURES IT CAN SUCCESSFULLY CREATE BOTH TYPES OF CONCEPTACLES.



SAMPLE PREPARATION STEP BY STEP:





Ulva prolifera

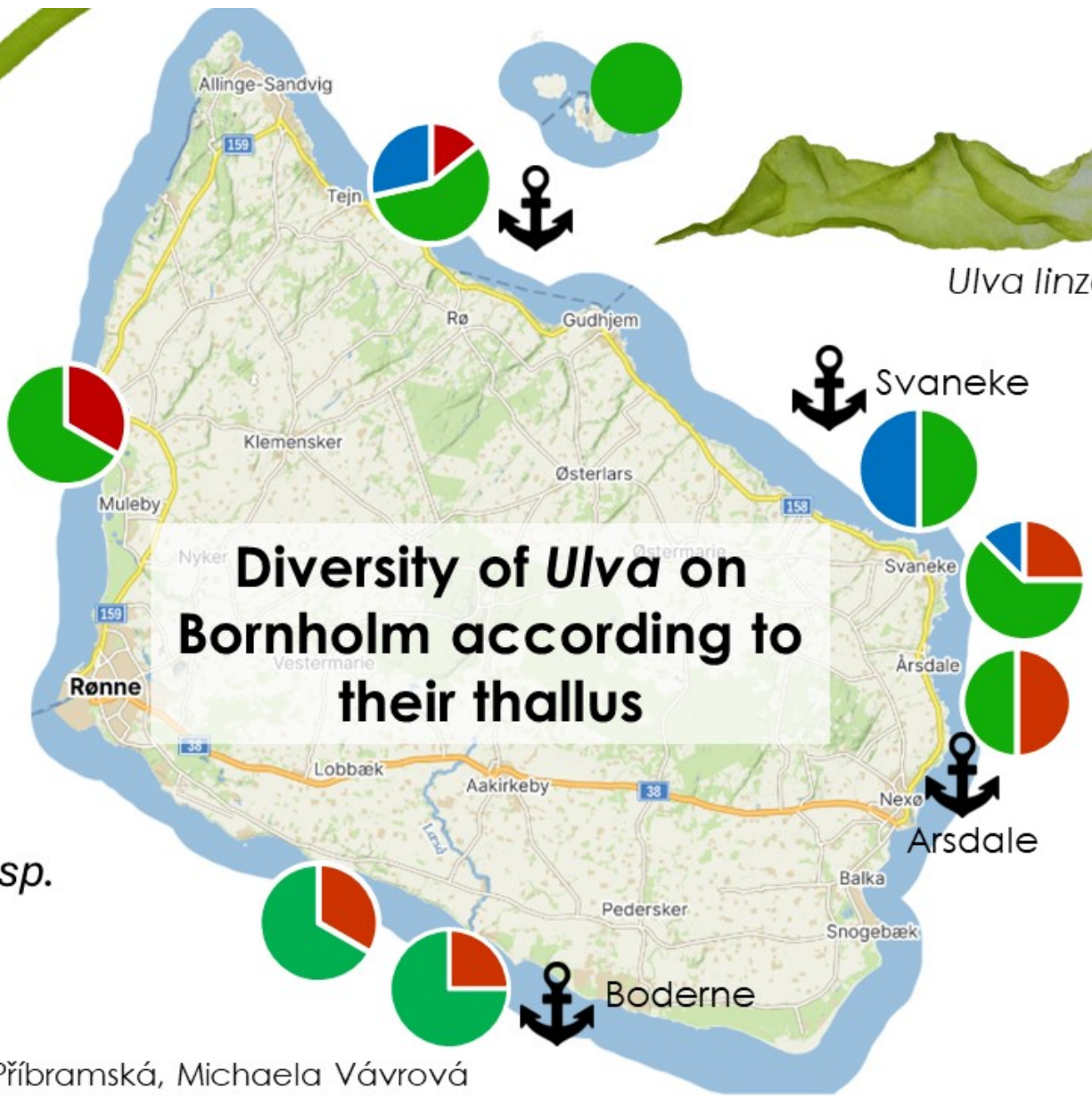


Ulva linza



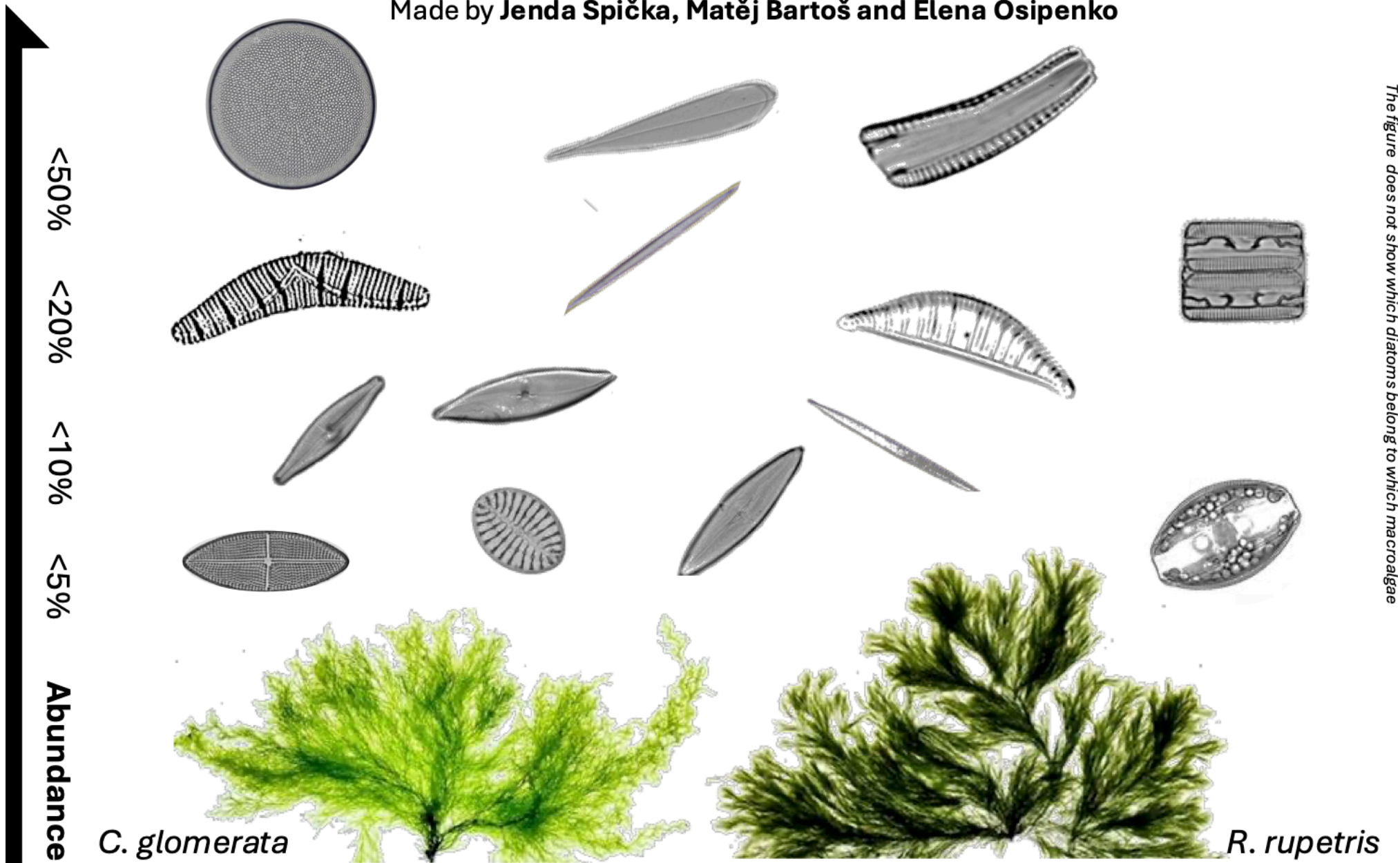
Monostroma sp.

- *Ulva linza*
- *Ulva prolifera*
- *Monostroma sp.*



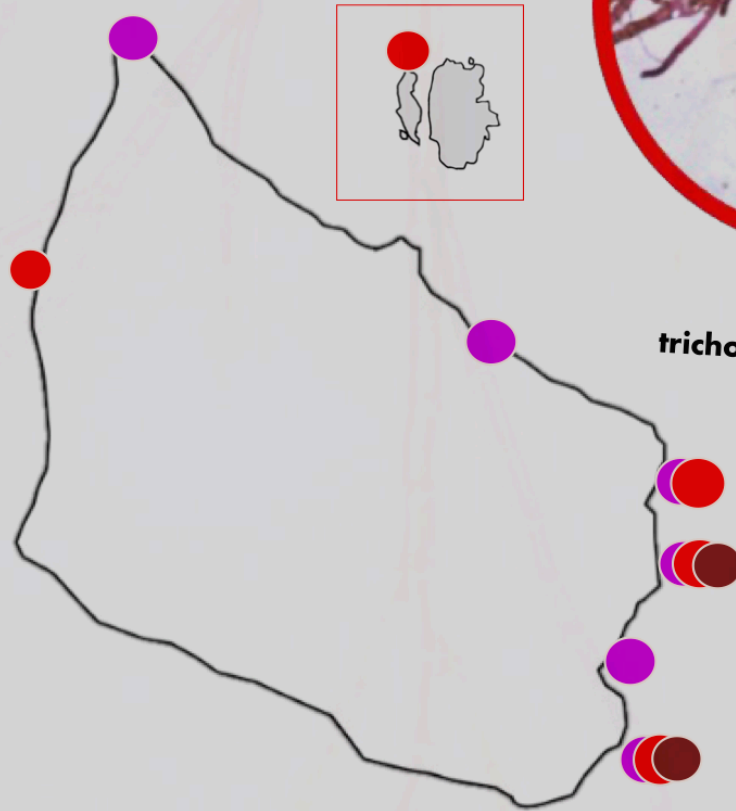
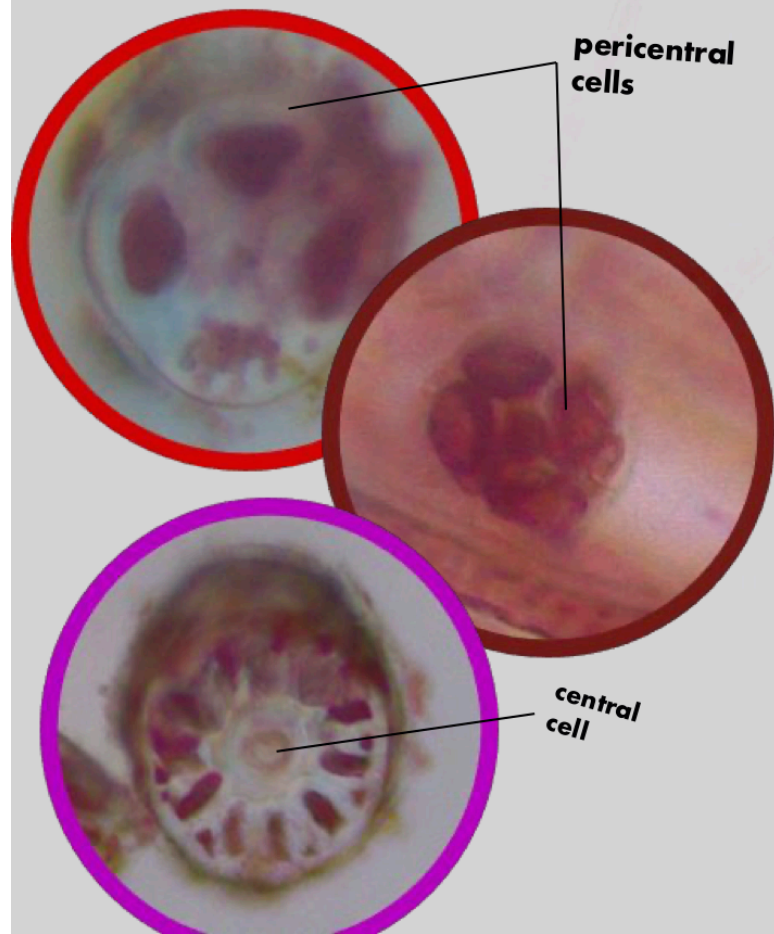
Epiphytic diatoms on *Rama rupestris* and *Cladophora glomerata* on Bornholm littoral and sublittoral

Made by Jenda Špička, Matěj Bartoš and Elena Osipenko



The figure does not show which diatoms belong to which macroalgae

Distribution and anatomy of baltic polysiphonia

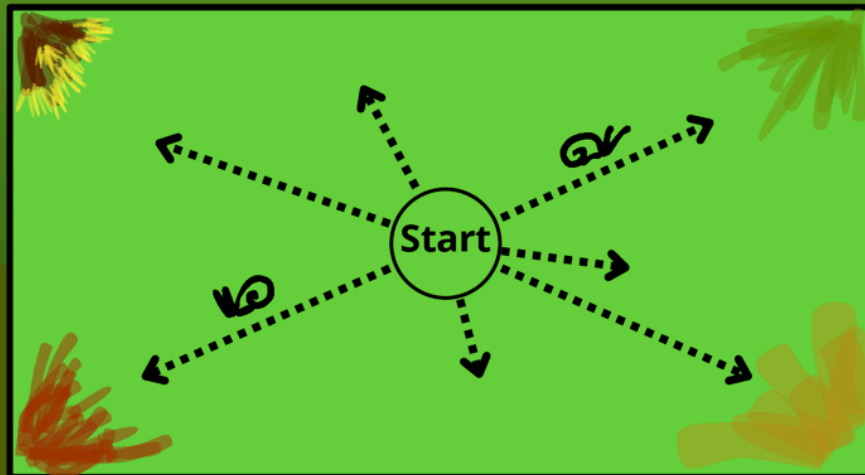


Dominik Černý, Denys Boyko, Klára Matoušková

Does *Theodoxus fluviatilis* prefer *Ulva* over other algae of Baltic sea?

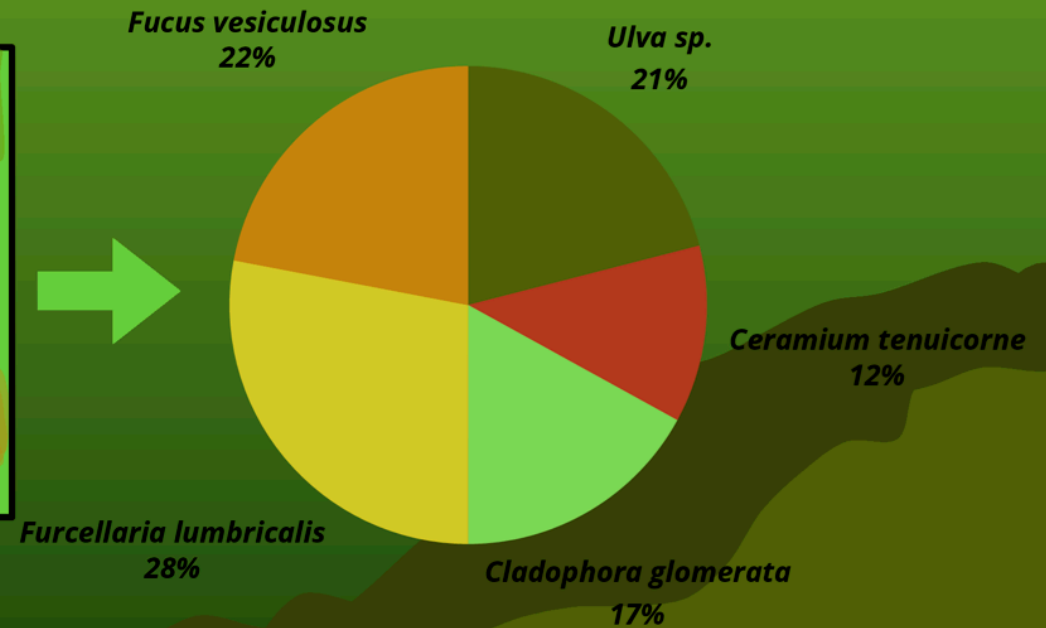
-No... probably

Method:



3:00

monitored appearance:



DICTYOSIPHON FOENICULACEUS AND STICTYOSIPHON TORTILIS

WHO IS WHO AND WHO IS WHERE?

LESS salt,
deeper!



MORE salt,
shallow water!

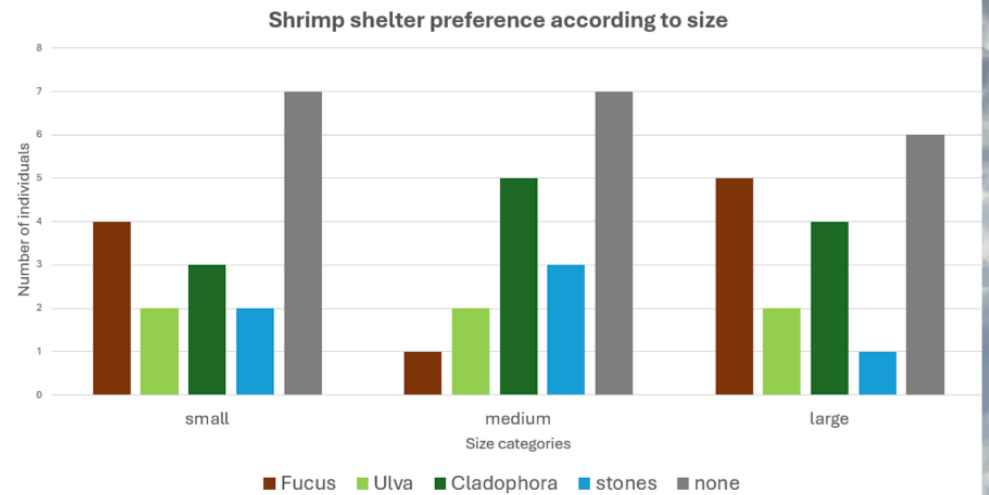
Will they be both
found on Bornholm?
If so, where and why?

BÁRA KUČEROVÁ
VIKTORIE KUSÁ

Shelter preference: *Palaemon elegans*



Jirka Hermann
Anaïs Ariadne Dix
Martin Kivader



- Short-term shelter preference differs based on shrimp size and algae morphology: larger shrimp are capable of moving through more cohesive filamentous algae
- Long-term shelter preference – overwhelmingly in favour of *Fucus*

